

TABLE P2903.2a
MAXIMUM FLOW RATES AND CONSUMPTION FOR PLUMBING FIXTURES, FIXTURE FITTINGS AND APPLIANCES

TABLE INSET:

PLUMBING FIXTURE OR FIXTURE FITTING	PLUMBING FIXTURE OR FIXTURE FITTING MAXIMUM FLOW RATE (b)
LAVATORY FAUCET	1.5 gpm at 60 psi
SHOWER HEAD (a)	1.5 gpm at 80 psi
SINK FAUCET	1.5 gpm at 60 psi
WATER CLOSET	1.28 gallons per flushing cycle.
DISHWASHER (RESIDENTIAL)	6.0 gallons per cycle or less (Energy Star /Water Sense Certified). (c)
WASHING MACHINE	Water factor of 8 or lower (Energy Star /Water Sense Certified). (c)
WHIRLPOOL/BATHTUB	4.0 gpm at 20 psi

NOTE:
SEE FIXTURES CLEARANCES DETAILS ON SHEET A-4 DETAILS.

PLUMBING
INTERIOR REMODELING & ALTERATION LEVEL II
FLORIDA BUILDING CODE 2020 7th EDITION

NOTE:
GENERAL CONTRACTOR TO SEAL ALL EXISTING GAPS AT EXISTING PLUMBING PENETRATIONS IN CONCRETE SLAB WITH 2-HOURS FIRE RATED CAULK OR SEALANT, WHEREVER APPLICABLE.

PLUMBING FIXTURES AND APPLIANCES SHALL COMPLY TO WATER USE EFFICIENCY STANDARDS MIAMI-DADE COUNTY, ORDINANCE B-14

NOTES:
1.-MAXIMUM WATER CONSUMPTION ARE IN FULL COMPLIANCE WITH MIAMI-DADE ARTICLE III SECTION 08-31. (USING "HIGH EFFICIENCY" PLUMBING FIXTURES).
2.-SHOWER VALVE SHALL BE BALANCED-PRESSURE-THERMOSTATIC OR COMBINATION, IN FULL COMPLIANCE W/FBC-Pib. 424.3 WITH LIMIT MAXIMUM SETTING OF VALVES = 120° F (49° C).

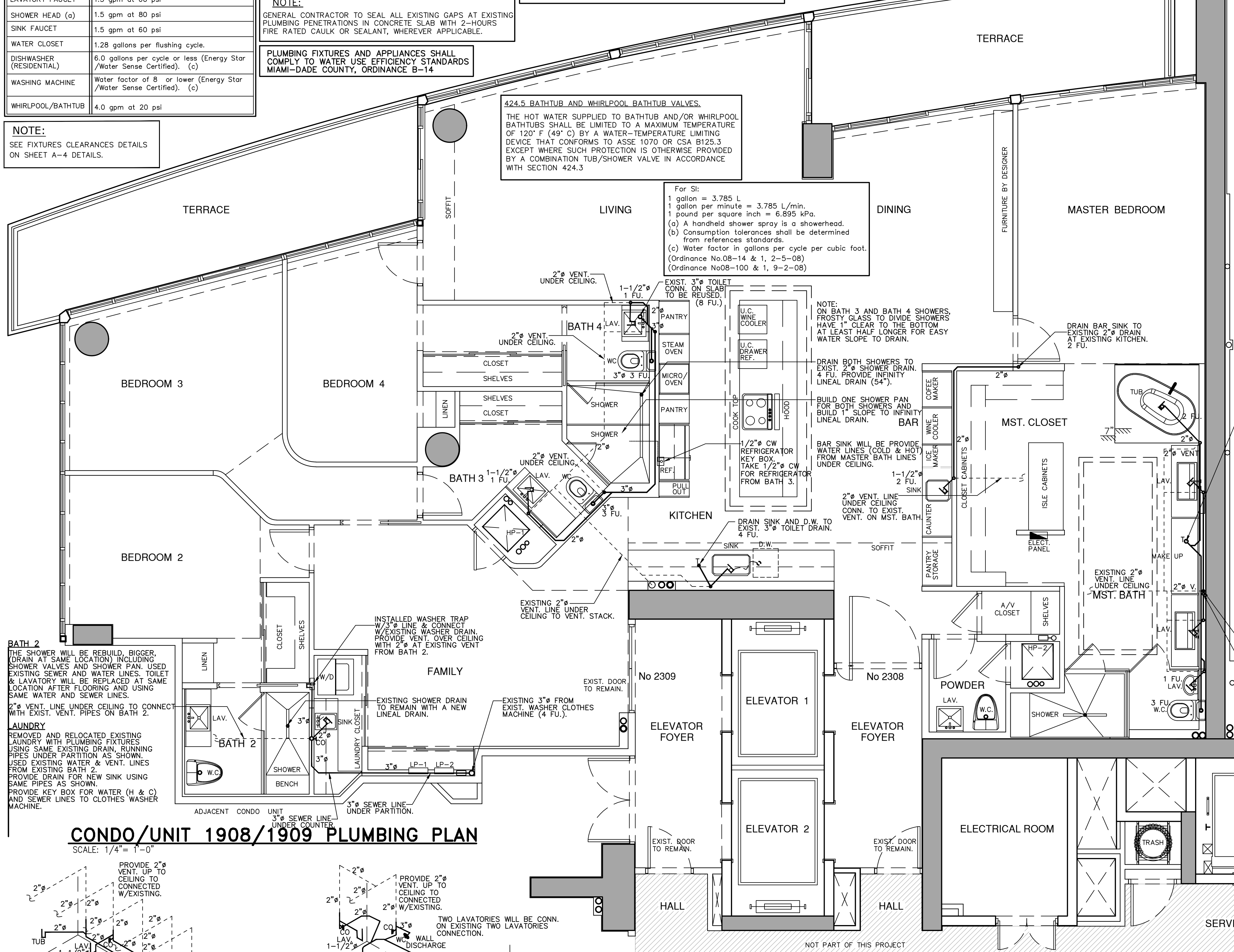
NOTES:
1.-ANTI SCALD VALVE @ EACH SHOWER HEADS AND TUB ARE EXISTING AND REMAIN THE SAME.
2.-SLOPE ALL DRAIN PIPING 2" AND LESS @ 1/4" P/F SLOPE, 3" & 4" @ 1/4" OR 1/8" P/F SLOPE.

424.5 BATHTUB AND WHIRLPOOL BATHTUB VALVES.
THE HOT WATER SUPPLIED TO BATHTUB AND/OR WHIRLPOOL BATHTUBS SHALL BE LIMITED TO A MAXIMUM TEMPERATURE OF 120° F (49° C) BY A WATER-TEMPERATURE LIMITING DEVICE THAT CONFORMS TO ASSE 1070 OR CSA B125.3 EXCEPT WHERE SUCH PROTECTION IS OTHERWISE PROVIDED BY A COMBINATION TUB/SHOWER VALVE IN ACCORDANCE WITH SECTION 424.3

For Sit:
1 gallon = 3.785 L
1 gallon per minute = 3.785 L/min.
1 pound per square inch = 6.895 kPa.
(a) A handheld shower spray is a showerhead.
(b) Consumption tolerances shall be determined from reference standards.
(c) Water factor in gallons per cycle per cubic foot. (Ordinance No.08-14 & 1, 2-5-08) (Ordinance No.08-100 & 1, 9-2-08)

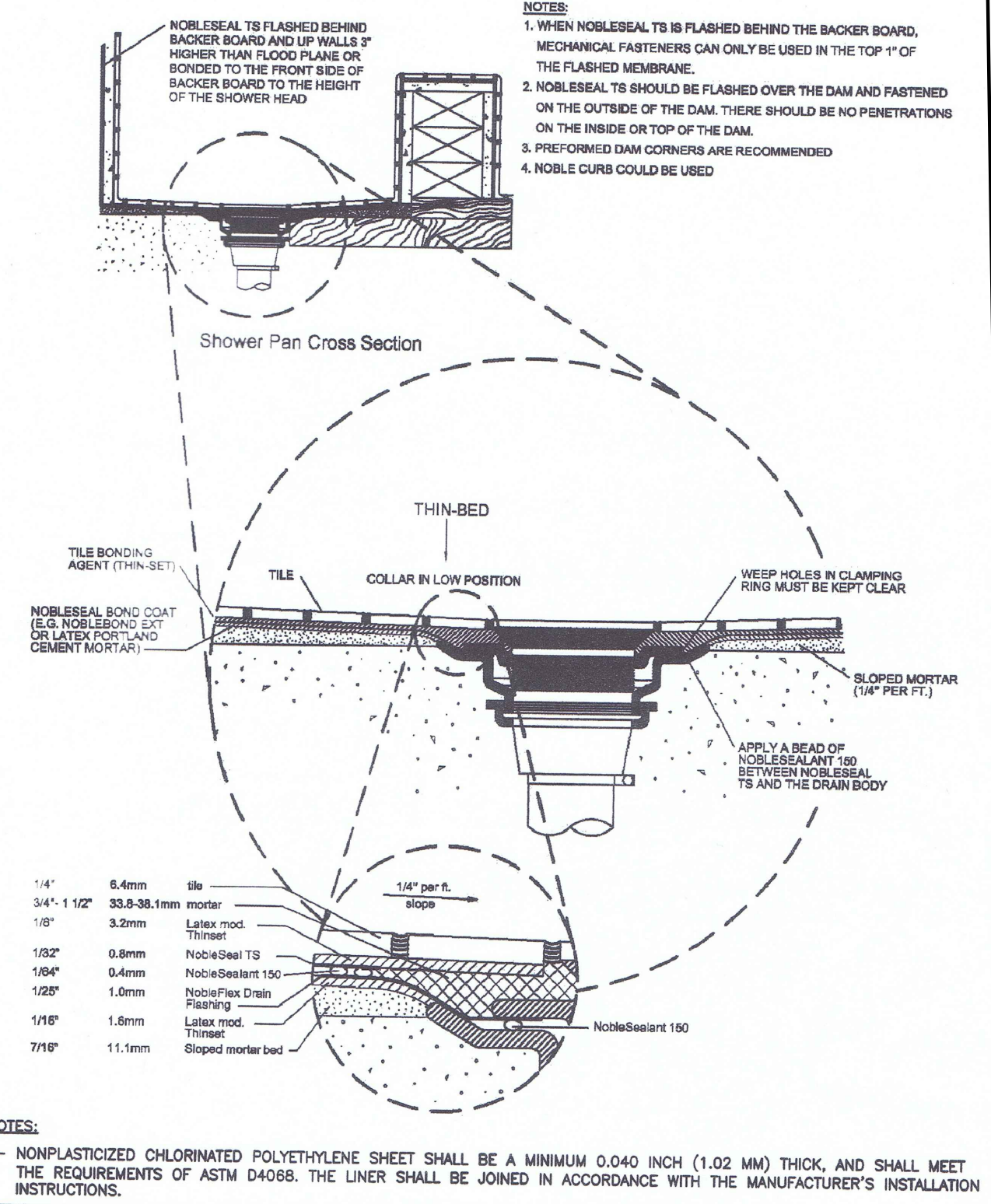
NOTE:
ON BATH 3 AND BATH 4 SHOWERS, FROSTY GLASS TO DIVIDE SHOWERS HAVE 1" CLEAR TO THE BOTTOM AT LEAST HALF LONGER FOR EASY WATER SLOPE TO DRAIN.

DRAIN BOTH SHOWERS TO EXIST. 2" SHOWER DRAIN. 4 FU. PROVIDE INFINITY LINEAL DRAIN (54").
BUILD ONE SHOWER PAN FOR BOTH SHOWERS AND BUILD 1" SLOPE TO INFINITY LINEAL DRAIN.
BAR SINK WILL BE PROVIDE WATER LINES (COLD & HOT) FROM MASTER BATH LINES UNDER CEILING.
1/2" CW REFRIGERATOR KEY BOX. TAKE 1/2" CW FOR REFRIGERATOR FROM BATH 3.
1-1/2" SINK
2" VENT. LINE UNDER CEILING CONN. TO EXIST. VENT. ON MST. BATH



PLUMBING SCOPE OF WORK

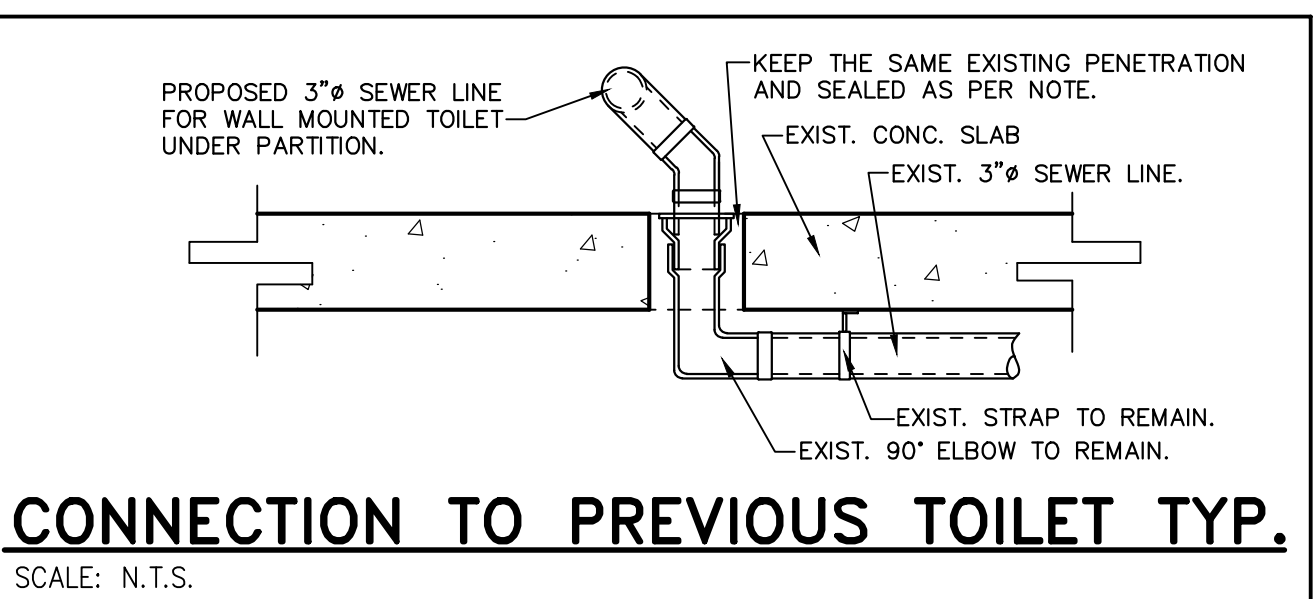
- 1 MASTER BATH**
-EXIST. JACUZZI WILL BE REMOVED & REPLACED FOR A TUB. BUILD A 7" WOOD STEP FOR RUNNING PIPES.
-RE-BUILD SHOWER BIGGER AT SAME LOCATION, INCLUDING SHOWER PAN, WITH SAME WATER AND SEWER LINES AS EXISTING.
-PROVIDE & INSTALL A NEW WALL MOUNTED TOILET AS SHOWN.
-INCLUDE NEW SMALL LAVATORY IN TOILET CABINET AS SHOWN.
-PROVIDE & INSTALL NEW VANITY WITH TWO LAVATORIES AT SAME LOCATION AS PER PLANS.
- 2 POWDER BATH**
-TOILET & LAVATORY WILL BE REPLACED AND REINSTALLED AT SAME PLACE AFTER BUILD A NEW MARBLE TILED FLOOR.
- 3 LAUNDRY**
-EXISTING LAUNDRY ON 1908 WILL BE RELOCATED USING SAME EXISTING DRAIN & WATER PIPES FROM ADJACENT BATH 2 AS SHOWN.
- 4 BATH 2**
-RE-BUILD SHOWER BIGGER AT SAME LOCATION, INCLUDING SHOWER PAN, WITH SAME WATER AND SEWER LINES AS EXISTING.
-TOILET & LAVATORY WILL BE REPLACED AND REINSTALLED AT SAME PLACE AFTER BUILD A NEW MARBLE TILED FLOOR.
- 5 KITCHEN**
-REPLACE & RELOCATE NEW SINK AND DISHWASHER USING EXISTING SEWER LINE FROM EXIST. TOILET JUST DOWN INTO CABINET AS SHOWN ON PLAN. REUSED EXISTING HOT AND COLD WATER LINES.
-PROVIDE A NEW 1/2" WATER LINE FOR RELOCATED REFRIGERATOR.
- 6 BATH 3 AND BATH 4**
-BATH 3 & 4 WILL BE TOTALLY NEW WITH NEW SHOWERS, VANITIES AND TOILETS AS SHOWN ON PLAN.



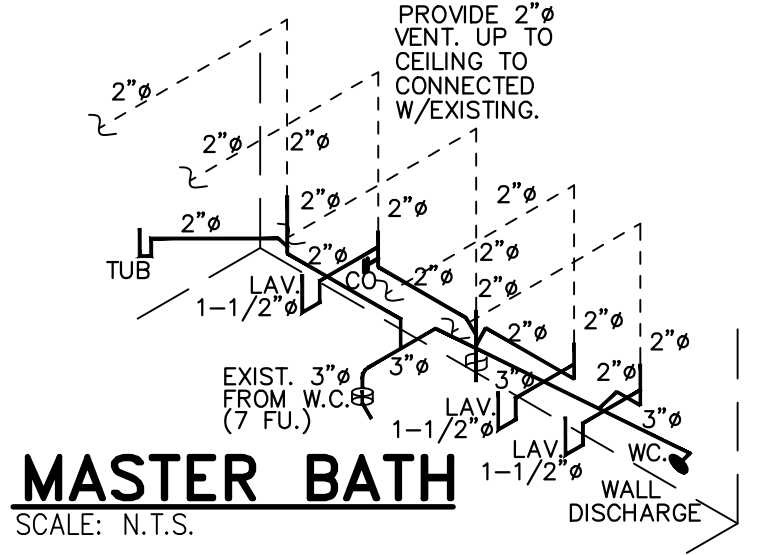
PLUMBING FIXTURE CONNECTION SCHEDULE AND COMPLIANCE

No.	DESCRIPTION	DRAIN	WATER COLD	WATER HOT	SAN. (FU)	MAX. FLOW RATE	FIXTURE COMPLIANCE
WC	WATER CLOSET	3"	1/2"	N/A	3	1.28 PER FLUSHING.	ANSI Z124.4, ASME A112.19.2, ASME A112.19.9M, CSA B45.1, CSA B45.4 or CSA B45.5.
LAV	LAVATORY	1-1/4"	1/2"	1/2"	1	1.5 AT 60 PSI.	ANSI Z124.3, ASME A112.19.1M, ASME A112.19.2M, ASME A112.19.3M, ASME A112.19.4M, ASME A112.19.9M, CSA B45.1, CSA B45.2, CSA B45.3 or CSA B45.4.
DW	DISHWASHER	1-1/2"	N/A	1/2"	2	6.0 Gal. Per CYCLE or LESS	ASSE 1006
SK	SINK	1-1/2"	1/2"	1/2"	2	1.5 AT 60 PSI.	ANSI Z124.6, ASME A112.19.1M, ASME A112.19.2M, ASME A112.19.3M, ASME A112.19.4M, ASME A112.19.9M, CSA B45.1, CSA B45.2, CSA B45.3 or CSA B45.4.
SH	SHOWER	2"	1/2"	1/2"	2	1.5 AT 80 PSI.	ANSI Z124.2, ASME A112.19.9M or CSA B45.5.
WM	WASHER MACHINE	3"	1/2"	1/2"	2	WATER FACTOR OF 8 g/cycle p/ft ³ or LOWER	ASSE 1007
BT	BATHTUB	1-1/2"	1/2"	1/2"	2	4.0 AT 20 PSI.	ASSE 1070

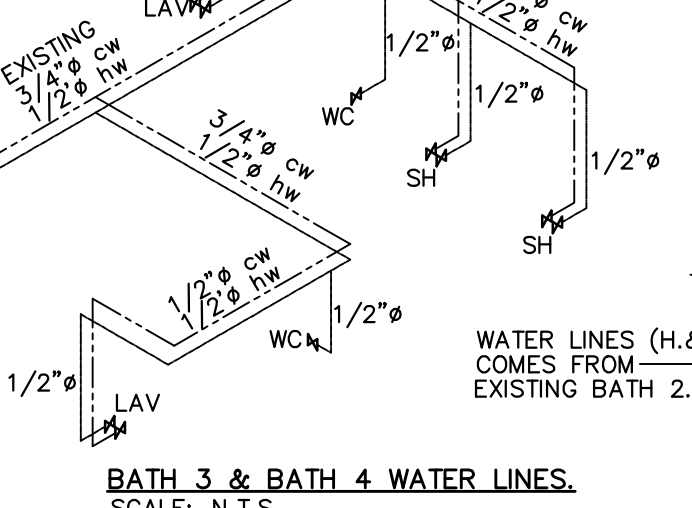
PIPING MATERIALS:
-DOMESTIC COLD AND HOT WATER SHALL BE COOPER TUBING TYPE L UNDERGROUND AND ABOVE GROUND WITH SOLDER JOINTS AND WOG BRONZE VALVES, 125 PSI. MIN.
-PROVIDE ARMAFLEX CLASS O, SELF SEAL INSULATION FOR HOT WATER LINES AND PROVIDE POLYPROPYLENE SLEEVES TO SEPARATE COOPER PIPES FROM CONCRETE.
-PLUMBING FIXTURES SHALL COMPLY WITH REFERENCES STANDARDS AS PER F.B.C. PLUMBING, 2020, SEVENTH EDITION.
-SANITARY WASTE AND VENTS SHALL BE PVC IN IPS DIAMETERS, INCLUDING SCHEDULE 40, DR 22 (PS 200) & DR 24 (PS 140) WITH A SOLID CELLULAR CORE OR COMPOSITE WALL, AS PER F.B.C. PLUMBING, 2020, 7th. EDITION. (ASTM D 2665, ASTM F 891, ASTM F 1488, CSA B 181.2)



CONDO/UNIT 1908/1909 PLUMBING PLAN
SCALE: 1/4" = 1'-0"



SEWER BATH 3 & BATH 4
SCALE: N.T.S.



LAUNDRY W/SINK
SCALE: N.T.S. WATER & SEWER LINES.

Fine Line Engineers Inc.
Electrical, Mechanical, Plumbing
Fire Protection, Construction Administration
7600 W. 20TH AVE Suite #110 Hialeah, FL 33016
Voice: 786-953-4901 - Fax: 786-953-4907
E-mail: cadinfo@fineengineers.com

GEORGE FREJO, P.E.
REGISTERED ENGINEER NO. 32578
STATE OF FLORIDA. CA#: 29798

DATE: _____

WESTHAVEN
CONSTRUCTION SERVICES, INC.

Westhaven Construction Services, Inc.
8254 NW South River Drive, Medley, FL 33166
LIC No. CB21258615
305-556-1418. Call 305-979-8624
arcgarcia@gmail.com

Fine Line Engineers Inc.
Mechanical, Plumbing, Fire Protection
7600 W. 20TH AVE SUITE 110, HIALEAH, FLORIDA, 33016
E-mail: waw@fineengineers.com

COMBINE TWO UNITS, INTERIOR REMODELING AND FINISHING ON CONTINUUM SOUTH TOWER No 1908/1909 FOR: JPMIA LLC.
100 South Pointe Drive No 1908/1909, Miami Beach, FL 33139

JOB No. 2021/05 ROD
STARTED: 04/20/21
COMPLETED: 05/15/21

REVISION	No.	DESCRIPTION	DATE:

P-1

Copyright notice: These drawings, designs and ideas are the property of Westhaven Construction Services, Inc. and are protected under the copyright laws of Florida. No part thereof shall be copied, or used in connection with any work other than for the specific project for which they have been prepared without written consent of Westhaven Construction Services, Inc.