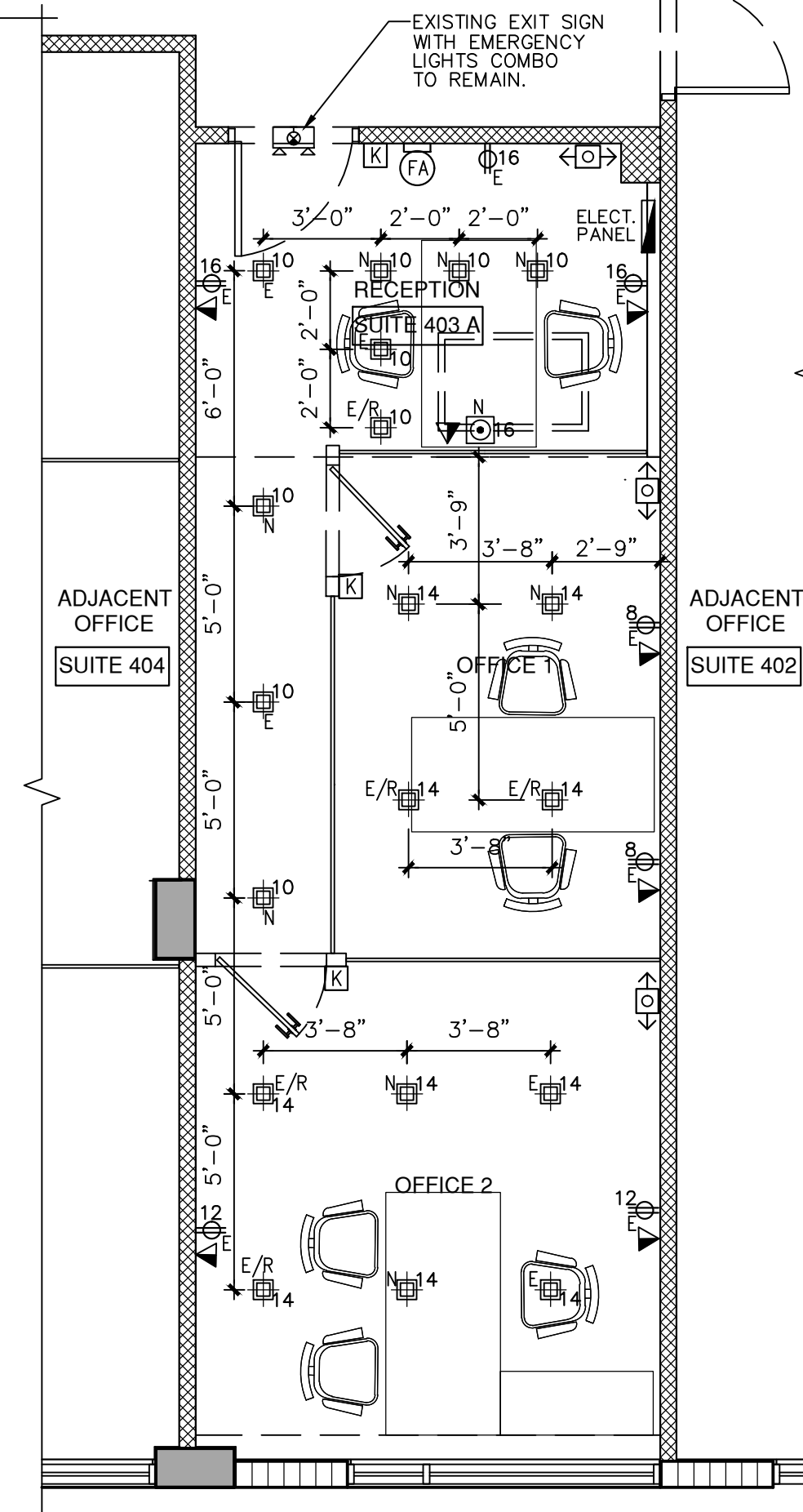


**YUKON OFFICES BUILDING SUITE 403 A
ELECTRICAL PLAN**

SCALE: 1/4" = 1'-0"

PROVIDE OCCUPANCY
SENSOR ON LIGHT
SWITCHES FOR RECEPTION,
OFFICE No 1 & OFFICE No 2.



LEGEND

- ⊕ ELECTRICAL DBL. OUTLET
- ⊙ ELECTRICAL FLOOR OUTLET
- 1-WAY SWITCH
- ELECTRICAL PANEL
- ⊖ EMERGENCY LIGHTS W/BATTERY POWER
- LIGHT RECEPTACLES
- ⊙ SMOKE DETECTOR AT CEILING
- ⊙ SMOKE DETECTOR AT WALLS
- ⊙ FIRE ALARM (SOUND) AT CEILING
- ⊙ FIRE ALARM (SOUND) AT WALLS
- ⊙ JUNCTION BOX
- ⊙ RECESS LIGHT SQUARE
- ⊙ RECESS LIGHT ROUND
- ⊙ KEY PAD/SWITCH
- ⊙ EXIT SIGN
- ⊙ DATA-CABLE
- ⊙ TV SET
- ⊙ MOTION SENSOR SWITCH

E DENOTE EXISTING TO REMAIN
E/R DENOTE EXISTING TO BE RELOCATED
N DENOTE NEW

NOTES:

- 1.-NOT ANY APPLIANCE LOAD HAS BEEN ADDED.
- 2.-FIRE ALARM IS EXISTING AND REMAIN THE SAME.

NOTE:

IF HAVE TO RELOCATED ANY
ELECTRIC FIRE ALARM SOUND,
THE SHOP-DRAWINGS FOR IT
WILL BE PROVIDED.

**SCOPE OF WORK ELECTRICAL
INTERIOR REMODELING & RENOVATION LEVEL II
FLORIDA BUILDING CODE 2020 7th EDITION**

1 RECEPTION

- PROVIDE THREE(3) NEW RECESSED LED LIGHTS (SAME AS EXISTING) AT EXISTING CEILING AND RELOCATE ANOTHER ONE(1) AS PER PLAN.
- PROVIDE A NEW FLOOR OUTLET ON SAME CIRCUIT AS PER PLAN.
- EXISTING EXIT SIGN W/EMERGENCY LIGHTS COMBO REMAIN THE SAME.
- EXISTING KEY PAD SWITCH AND FIRE ALARM REMAIN THE SAME.
- EXISTING WALL RECEPTACLES REMAIN THE SAME.
- PROVIDE A NEW MOTION SENSOR SWITCH AS PER PLAN.

2 HALLWAY & OFFICE 1

- PROVIDE THREE(3) NEW RECESSED LED LIGHTS (SAME AS EXISTING) AT EXISTING CEILING AND RELOCATE ANOTHER TWO(2) AS PER PLAN.
- PROVIDE A NEW KEY PAD SWITCH AS PER PLAN.
- EXISTING WALL RECEPTACLES REMAIN THE SAME.
- PROVIDE A NEW MOTION SENSOR SWITCH AS PER PLAN.

3 OFFICE 2

- PROVIDE TWO(2) NEW RECESSED LED LIGHTS (SAME AS EXISTING) AT EXISTING CEILING AND RELOCATE ANOTHER TWO(2) AS PER PLAN.
- PROVIDE A NEW KEY PAD SWITCH AS PER PLAN.
- EXISTING WALL RECEPTACLES REMAIN THE SAME.
- PROVIDE A NEW MOTION SENSOR SWITCH AS PER PLAN.

EXISTING PANEL A

MODEL: SQUARE D LOAD CENTER EXIST. MAIN FEEDER = 60 AMP. MAIN BUS: 60 AMP.
SERVICE: 1Ø 3W-120/240V NEUTRAL: 60 AMP.
MOUNTING: RECESSED MAINS: 60 A MCB
MAIN FEEDER: 3# 6 THWN CU, 1# 10 THWN(G) IN 1"Ø COND. A.I.C.: 10,000

CKT.	DESCRIPTION	LOAD	Bk.	P	WIRE	COND.	CKT.	DESCRIPTION	LOAD	Bk.	P	WIRE	COND.
1	SPARE						2	SPARE					
3	SPARE						4	SPARE					
5	SPACE						6	SPARE					
7	A/C	3.5	30	2	10	3/4"	8	RECEPT. OFF. #1	1.0	20	1	12	1/2"
9							10	LIGHT RECEPTION/HALL	1.0	20	1	12	1/2"
11	AC CONDENSATE PUMP	1.0	20	1	12	1/2"	12	RECEPT. OFF. #2	1.0	20	1	12	1/2"
13	SPACE						14	LIGHT OFF. #1 & #2	1.0	20	1	12	1/2"
15	SPACE						16	RECEPT. RECEPTION	1.0	20	1	12	1/2"
17	SPACE						18	SPACE					
19	SPACE						20	SPACE					

Fine Line Engineers Inc.

Electrical, Mechanical, Plumbing
Fire Protection, Construction Administration
7600 W. 20TH AVE Suite #110 Hialeah, FL 33016
Voice: 786-953-4901 - fax: 786-953-4907
E-mail: cadinfo@flengineers.com

GEORGE FREIJO, P.E.
REGISTERED ENGINEER NO. 32578
STATE OF FLORIDA C# 29796

DATE

© ALL RIGHTS RESERVED
BY THE ENGINEER



Westhaven Construction Services, Inc.
8254 NW South River Drive, Medley FL 33166
LIC No CBC1259615
305-556-4416 Cell 305-975-8624
archygarcia@gmail.com

Fine Line Engineers Inc.
Electrical, Mechanical, Plumbing, Fire Protection
Construction Administration
7600 WEST 20TH AVE SUITE 110, HIALEAH, FLORIDA, 33016
E-mail: wv@flengineers.com

INTERIOR RENOVATION FOR:
YUKON OFFICES BUILDING
YANTRA 119 L.L.C.
SUITE No 403 A
119 Washington Avenue, Miami Beach, FL 33139

JOB No. 2305 ROD
STARTED: 07/10/23
COMPLETED: 08/10/23

REVISION		
No.	DESCRIPTION	DATE

E-1