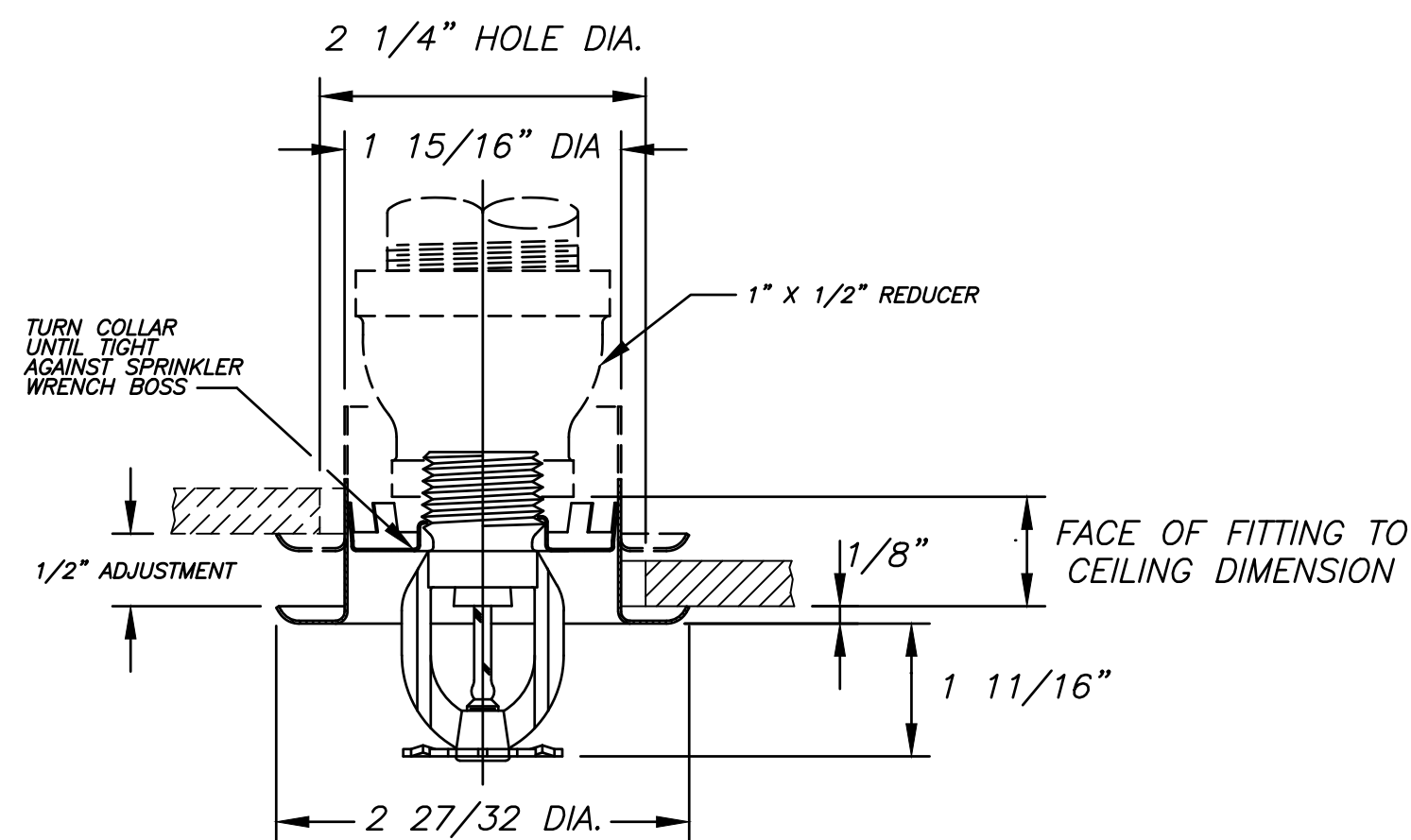


TYPICAL HANGER DETAIL
N.T.S.

PIPE SIZE	ROD SIZE	TYPE OF FASTENER	MIN. 'C' DIM.	MAX. 'C' DIM.
3/4"	3/8"	1-3/8" X 1-17/32" DROP-IN ANCHOR	1/2"	1-5/8"
1"			5/8"	1-3/4"
1-1/4"			13/16"	1-7/8"
1-1/2"			15/16"	2"
2"			1-3/16"	2-3/8"
2-1/2"	1/2"	1-1/2" X 2-1/32" DROP-IN ANCHOR	1-7/16"	2-3/4"
3"			1-3/4"	3-1/4"
3-1/2"			2"	3-5/8"
4"	5/8"	1-5/8" X 2-15/32" DROP-IN ANCHOR	2-1/4"	3-7/8"
5"			2-3/4"	4-3/4"
6"			3-5/16"	5-1/2"
8"	N/A	N/A	N/A	N/A

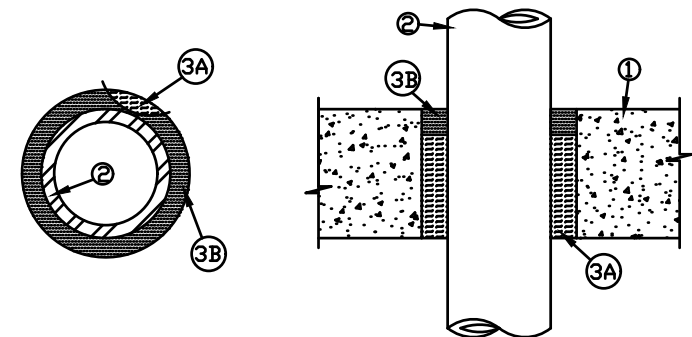
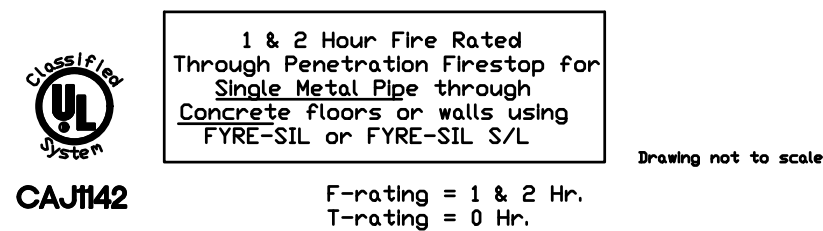


TYPICAL RECESSED PENDENT SPRINKLER DETAIL

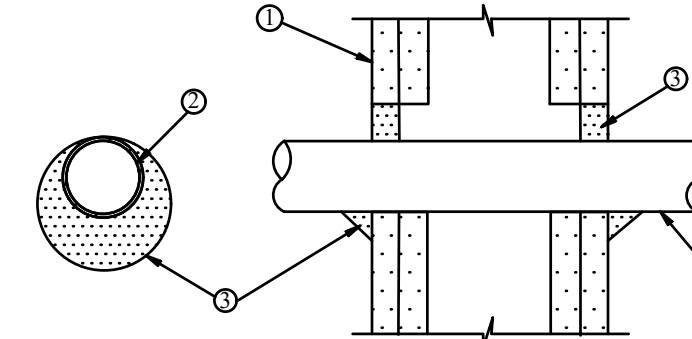
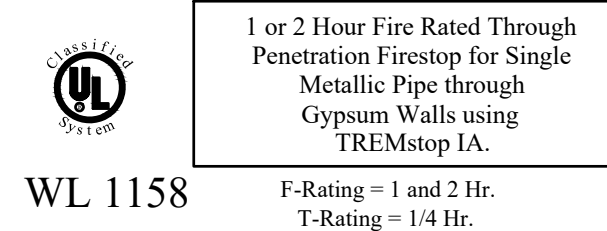
FIRE PROTECTION NOTES:

- ALL FIRE SPRINKLER WORK SHALL BE DONE ACCORDING TO LATEST N.F.P.A. 13, 25, 101 AND STATE AND LOCAL CODES AND ORDINANCES.
- CONTRACTOR SHALL PAY ALL FEES, INSPECTION AND CONNECTION CHARGES REQUIRED.
- SPRINKLER CONTRACTOR SHALL VERIFY ALL SPACE CONDITIONS AND DIMENSIONS AT JOB SITE PRIOR TO FABRICATION AND INSTALLATION OF MATERIALS AND EQUIPMENT.
- COORDINATE WORK WITH OTHER TRADES.
- SUBMIT SHOP DRAWINGS TO ENGINEER FOR APPROVAL OF ALL EQUIPMENT, MATERIALS, LAYOUTS AND CALCULATIONS, PRIOR TO INSTALLATION.
- SPRINKLER CONTRACTOR SHALL GUARANTEE ALL WORK FREE OF DEFECTS IN MATERIAL AND WORKMANSHIP FOR A PERIOD OF ONE YEAR FROM DATE OF ACCEPTANCE.
- FIRE LINES [INCLUDING FIRE SPRINKLER LINES]**
 - UNDERGROUND: DUCTILE IRON PIPE.
 - ABOVE GROUND: SCHEDULE TO ALLIED XL-IN CONCEALED SPACE
 - SPRINKLER STANDPIPE SHALL BE SCHEDULE 10 BLACK STEEL PIPE WITH GROOVED FITTINGS.
- ALL VALVES SHALL BE UL LISTED FOR FIRE PROTECTION SERVICE AND BE SUPERVISED BY THE FIRE ALARM SYSTEM.
- DOUBLE CLAPPER PROJECTING SIAMESE CONNECTIONS SHALL BE GUARDIAN MODEL 133 OR EQUAL.
- TESTS:** WATER PIPING: TEST TO 50 PSI BEYOND THE HIGHEST ANTICIPATED PRESSURE.

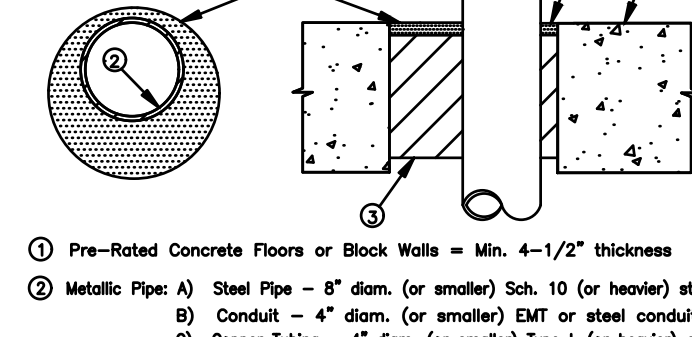
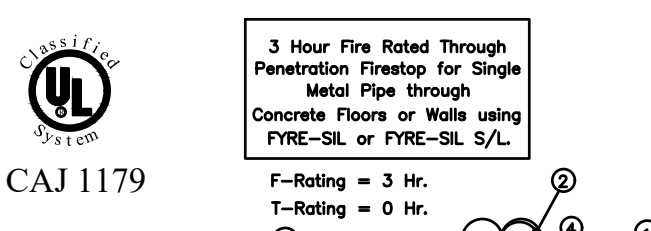
NOTE: ALL LOW POINTS TO BE EQUIPPED WITH AUXILIARY DRAINS PER NFPA 13
- ALL EXPOSED WET PIPING SHALL BE INSULATED TO PREVENT FREEZING
- THESE DRAWINGS WERE PREPARED BASED ON NFPA-13, 2002 EDITION
- CONTRACTOR SHALL PROVIDE SHOP DRAWINGS. SHOP DRAWINGS SHALL COMPLY WITH N.F.P.A. 13 AND NFPA 101.8.6.7 THESE DRAWINGS ARE A BASIS OF DESIGN ONLY. CONTRACTOR SHALL INCLUDE ANY MISSING INFORMATION BASED ON N.F.P.A. 13.
- SEE FIRE ALARM DRAWINGS FOR ALL SEQUENCES AND INTERLOCK BETWEEN FIRE SPRINKLER SYSTEM AND FIRE ALARM SYSTEM.
- ELEVATORS SHALL BE PROTECTED PER NFPA 13.4-5.5, UNIFORM SAFETY RULES, CHAPTER 4A-47. COMPLIANCE WITH STATE FIRE MARSHALS RULES 4A-47.



FIRE RATED PIPE PENETRATION DETAIL
N.T.S.



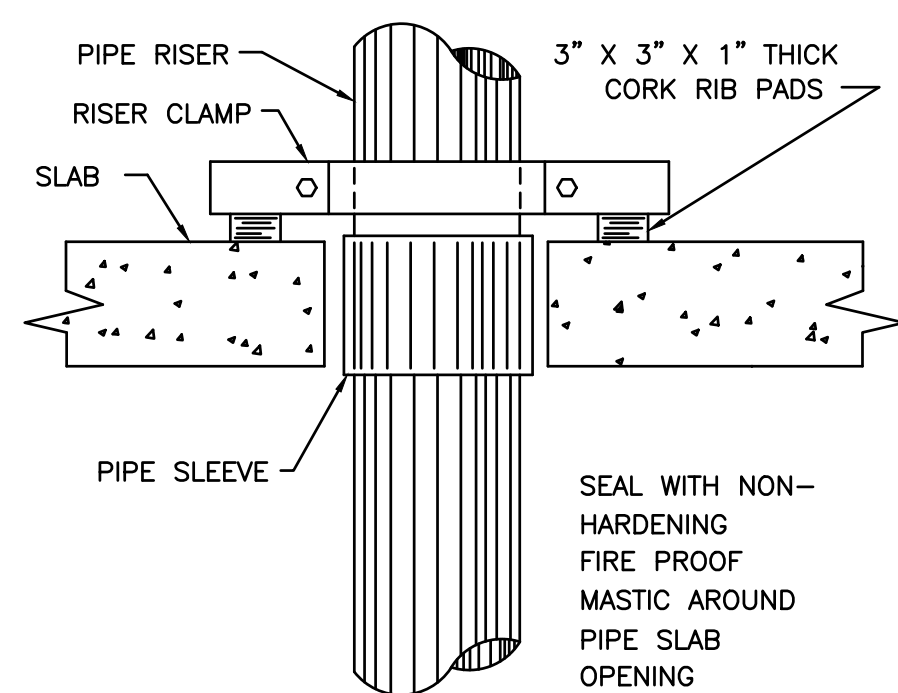
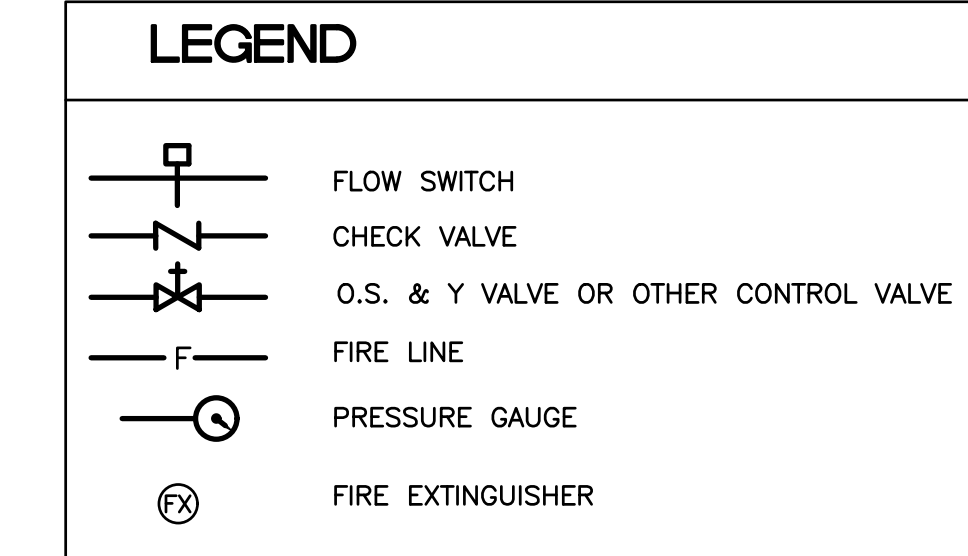
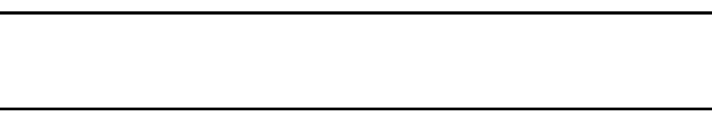
FIRE RATED PIPE PENETRATION DETAIL



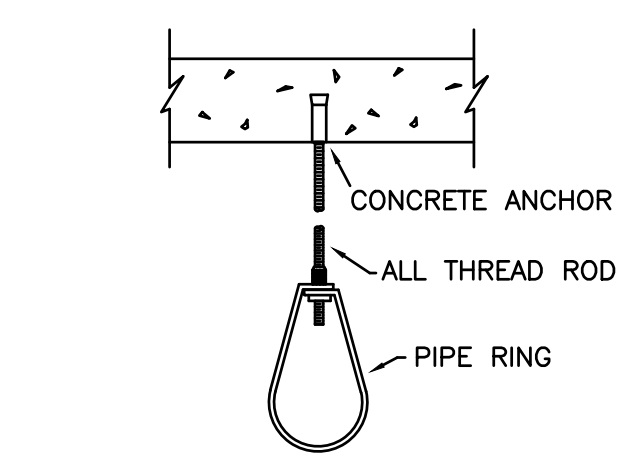
FIRE RATED PIPE PENETRATION DETAIL
N.T.S.



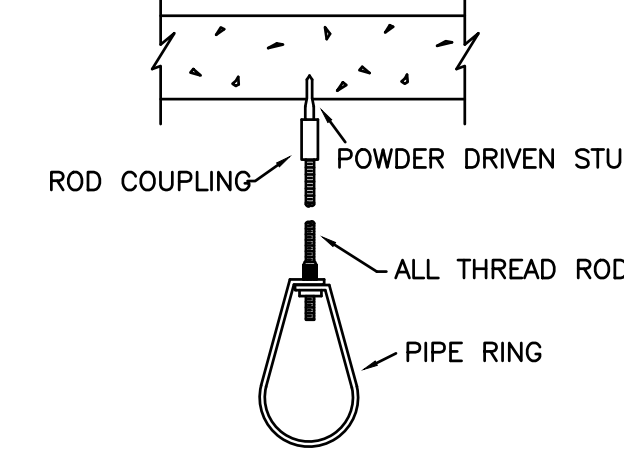
FIRE RATED PIPE PENETRATION DETAIL
N.T.S.



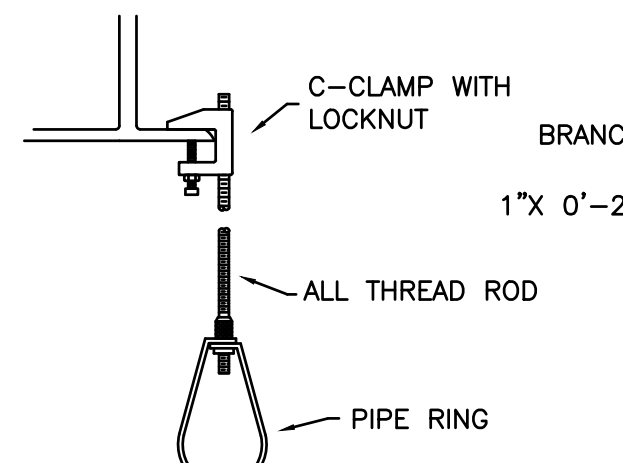
TYPICAL VERTICAL WATER PIPE SUPPORT DETAILS



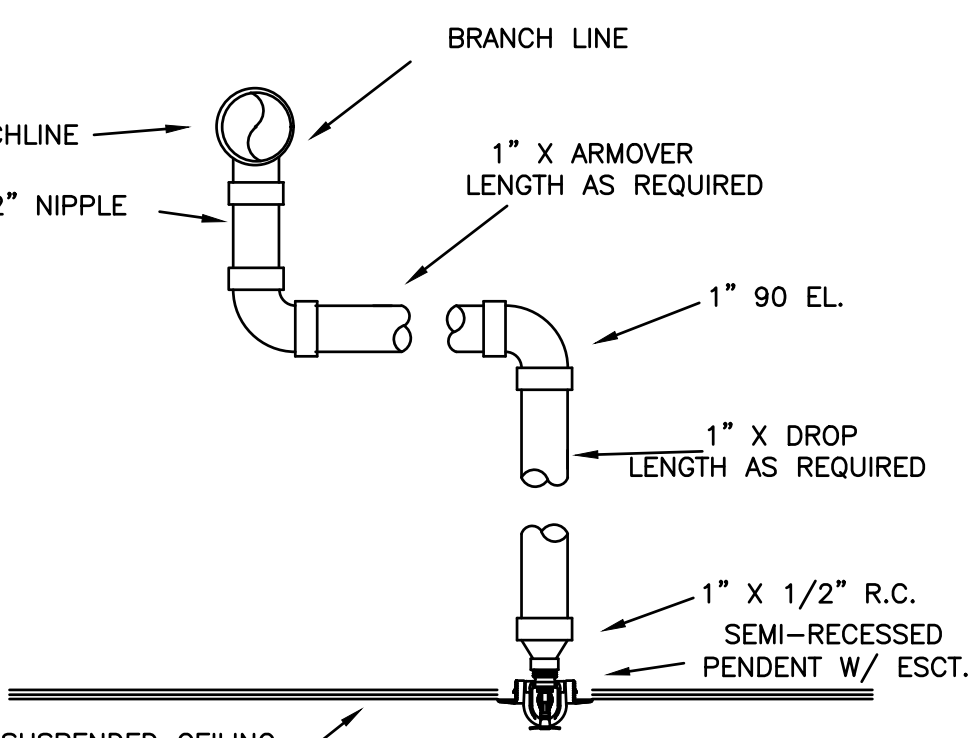
DRILLED CONC. ANCHOR HANGER



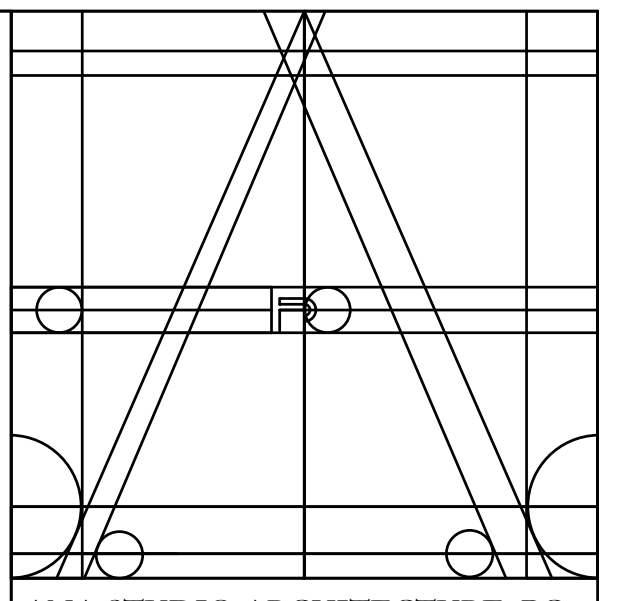
POWDER DRIVEN STUD HANGER



C-CLAMP HANGER



TYP. SWING AND DROP ASSEMBLY



ANA STUDIO ARCHITECTURE, PC
ANA RESKREIS, RA
280 RIVERSIDE DRIVE, NEW YORK, N.Y. 10025
+1 516.461.5416 +1 516.461.5415
ANASTUDIO@GMAIL.COM
WWW.FRENCHDRS.COM

SINGER RESIDENCE
1725 YORK AVENUE
15D

NEW YORK, N.Y.
10128

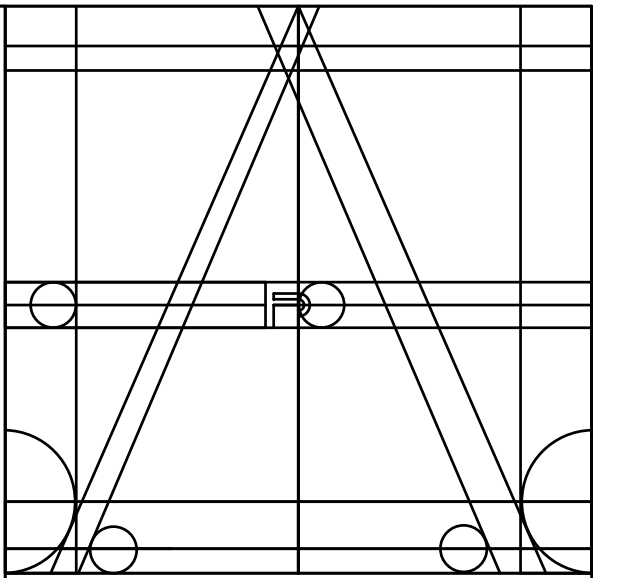
NOTES

No.	Date	Description

TITLE

DATE: 03/15/2019
PROJECT No.:
DRAWN BY:
CHECKED BY:
DWG No.:

Fine Line Engineers Inc.
Electrical, Mechanical, Plumbing
Fire Protection, Construction Administration
2089 W. 76TH STREET Hialeah, FL 33016
Voice: 786.933-4801 • Fax: 786.933-4907
E-mail: admin@fineengineers.com
GEORGE FREJO, P.E.
REGISTERED ENGINEER NO. 35578
STATE OF FLORIDA, C.A.# 22796



ANA STUDIO ARCHITECTURE, PC
 ANA RESKREIS, RA
 280 RIVERSIDE DRIVE (8th), NEW YORK, N.Y. 10025
 +1 516.641.5416 +1 516.641.8624 55
 ANASTUDIO@GMAIL.COM
 WWW.FRENCHIDRBS.COM

SINGER RESIDENCE
 1725 YORK AVENUE
 15D
 NEW YORK, N.Y.
 10128

NOTES

No.	Date	Description

TITLE

SEAL & SIGNATURE	DATE: 05/15/2019
	PROJECT No:
	DRAWN BY:
	CHECKED BY:
	DWG No:

Fine Line Engineers Inc.
 Electrical, Mechanical, Plumbing
 Fire Protection, Construction Administration
 2089 W. 76TH STREET Hialeah, FL 33016
 Voice: 786.913-4301 • Fax: 786.913-4907
 E-mail: caddr@fineengineers.com
 GEORGE FREJO, P.E.
 REGISTERED ENGINEER NO. 25578
 STATE OF FLORIDA C.A.# 27396

PAGE OF
 SPACE FOR NYC-BSCAN STICKER