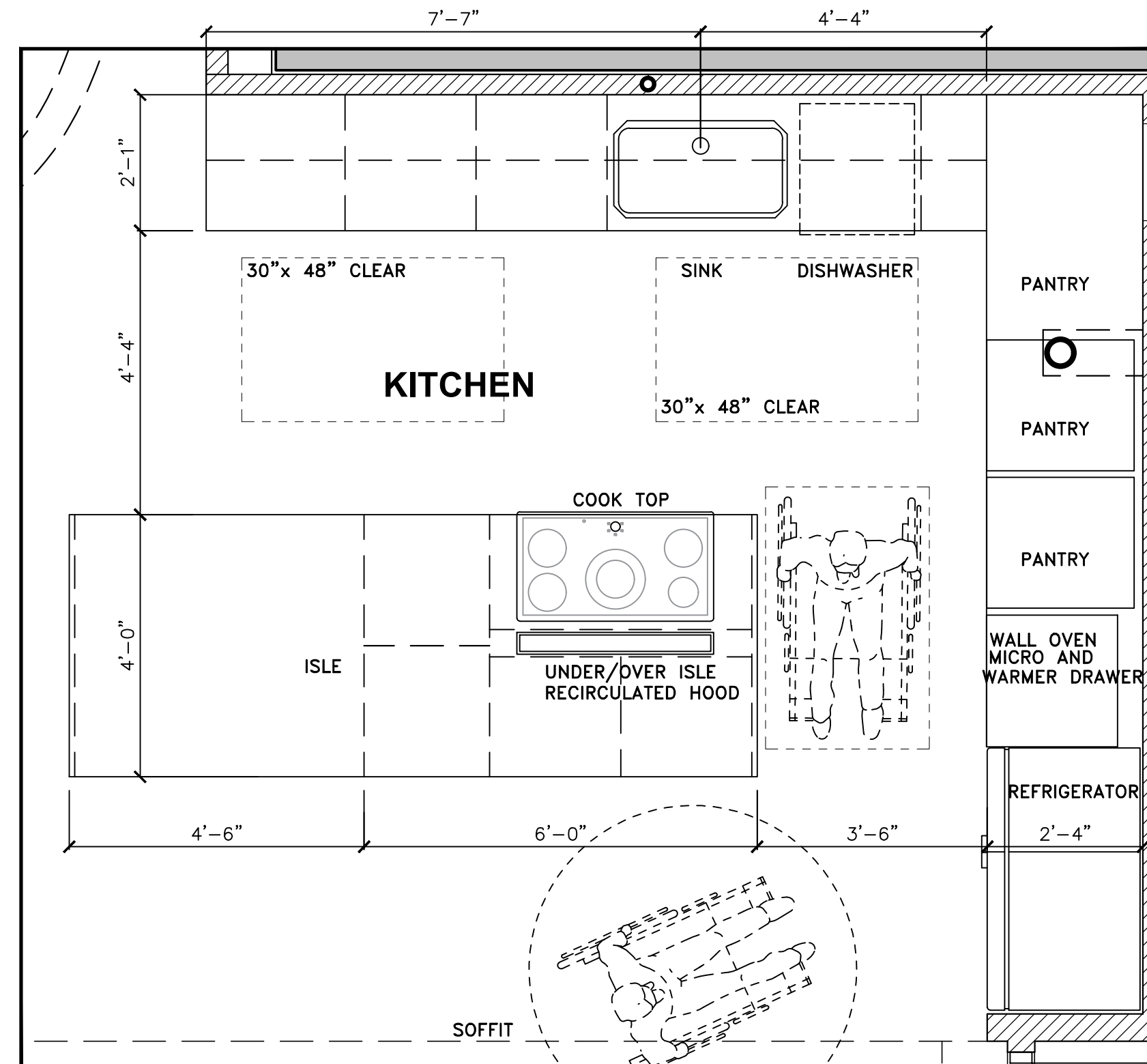
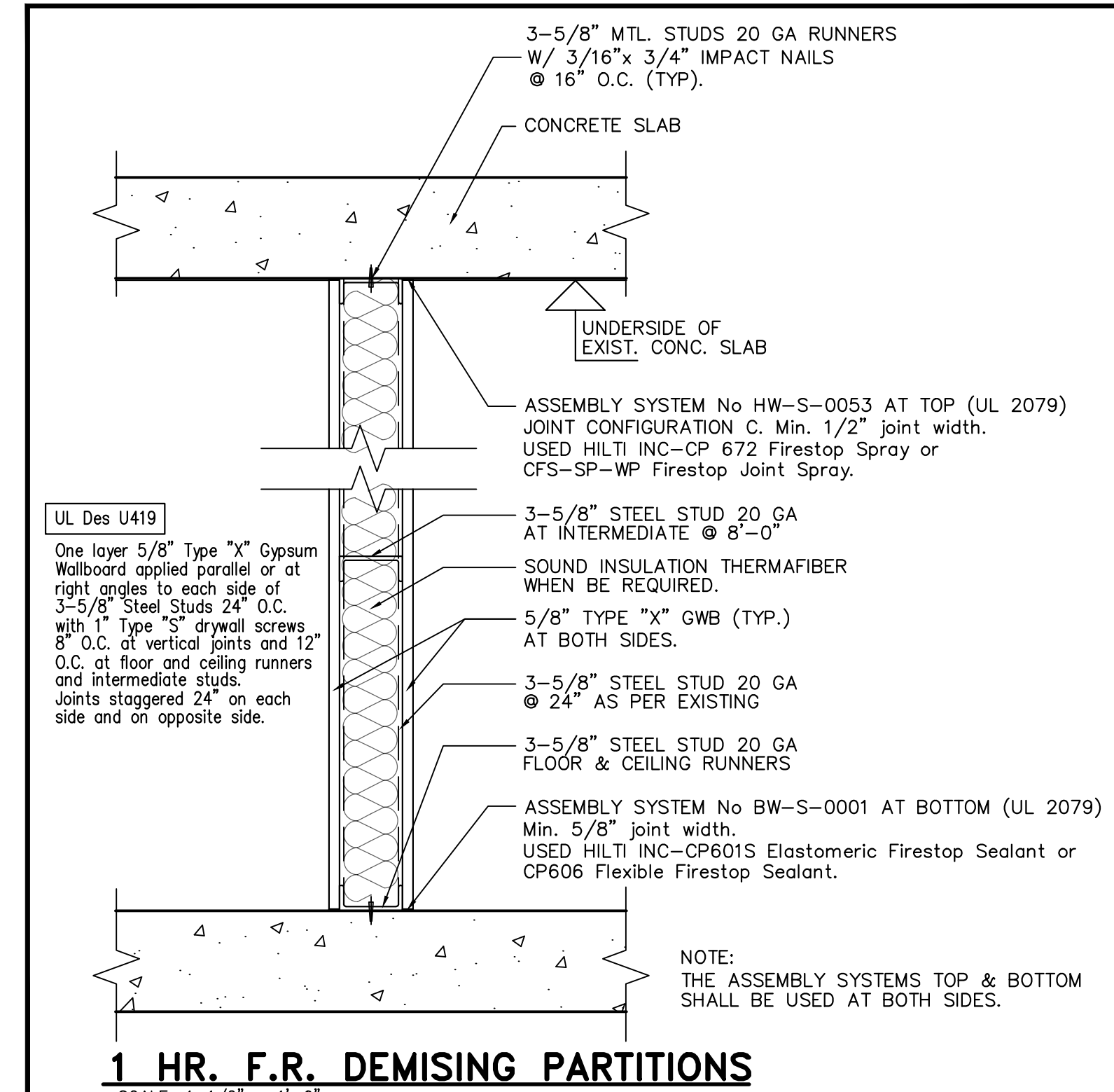


ENLARGED MASTER BATH
SCALE 1/2" = 1'-0"

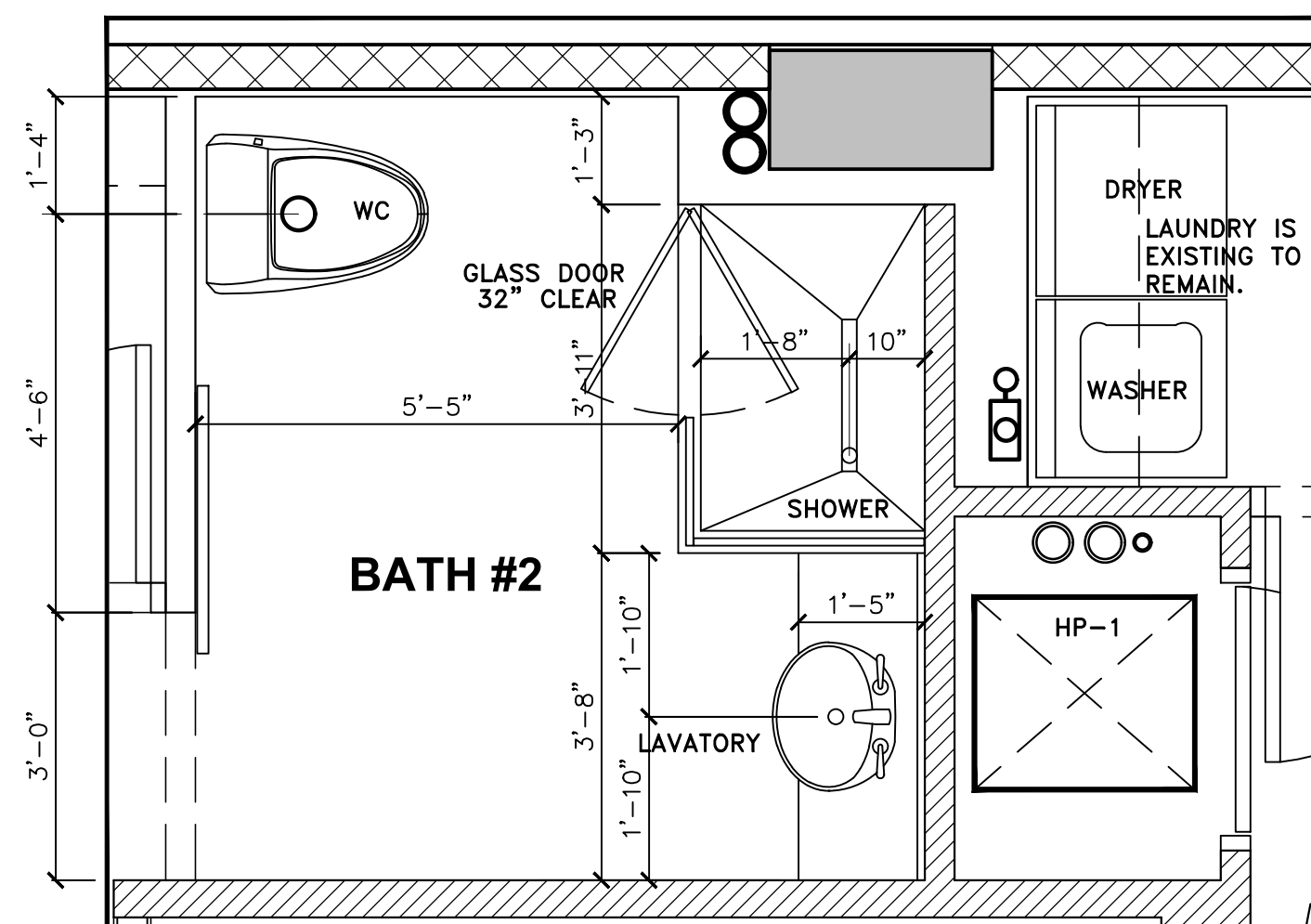


ENLARGED KITCHEN
SCALE 1/2" = 1'-0"

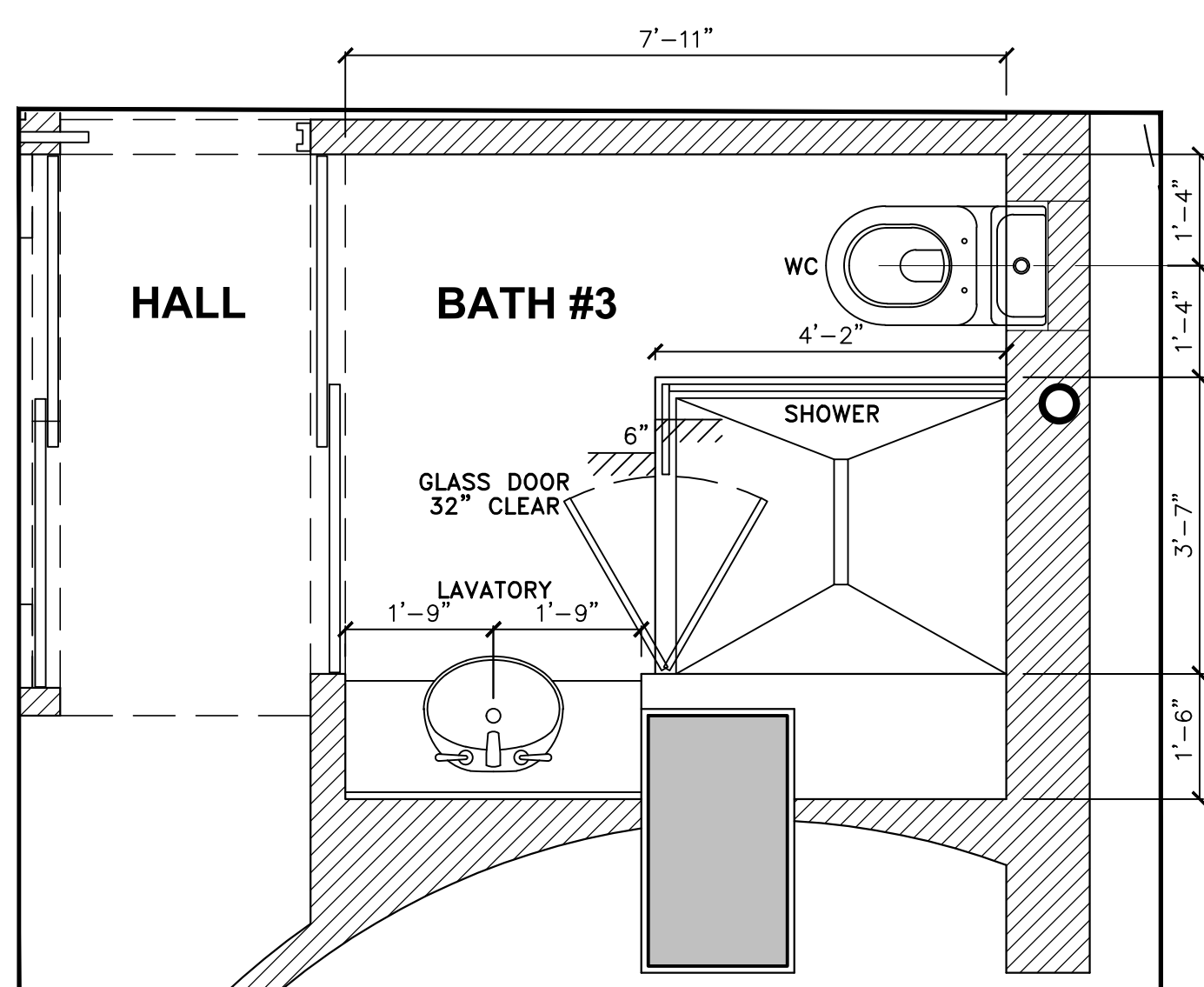


1 HR. F.R. DEMISING PARTITIONS
SCALE: 1-1/2" = 1'-0"

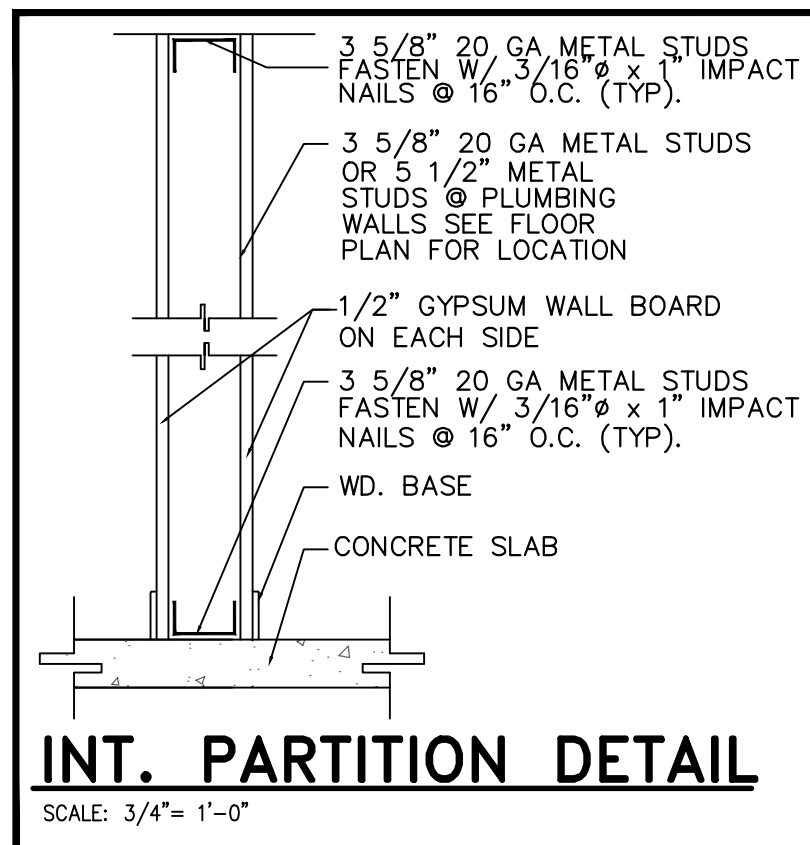
ADA COMPLIANCE IN MASTER BATH AND KITCHEN



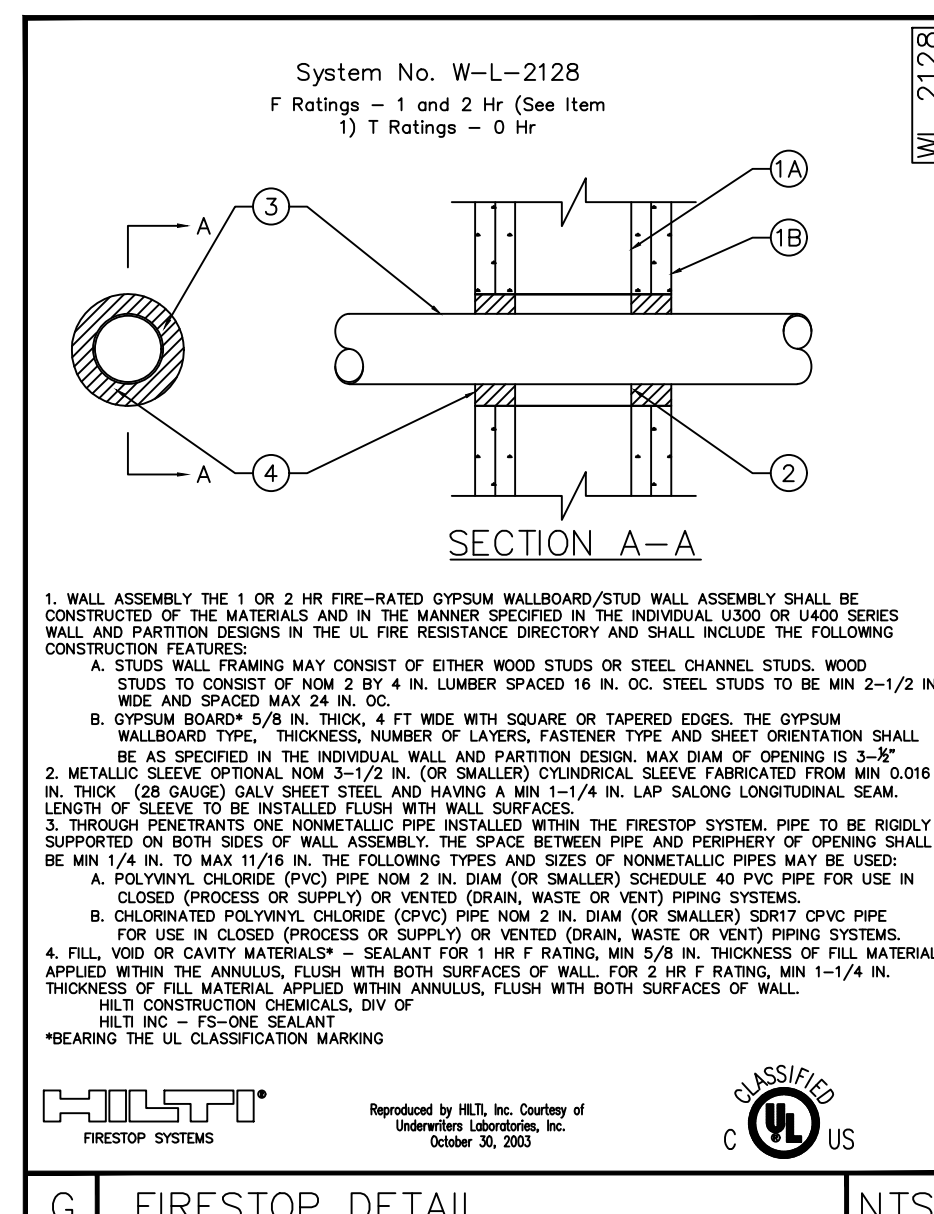
ENLARGED BATH #2
SCALE 1/2" = 1'-0"



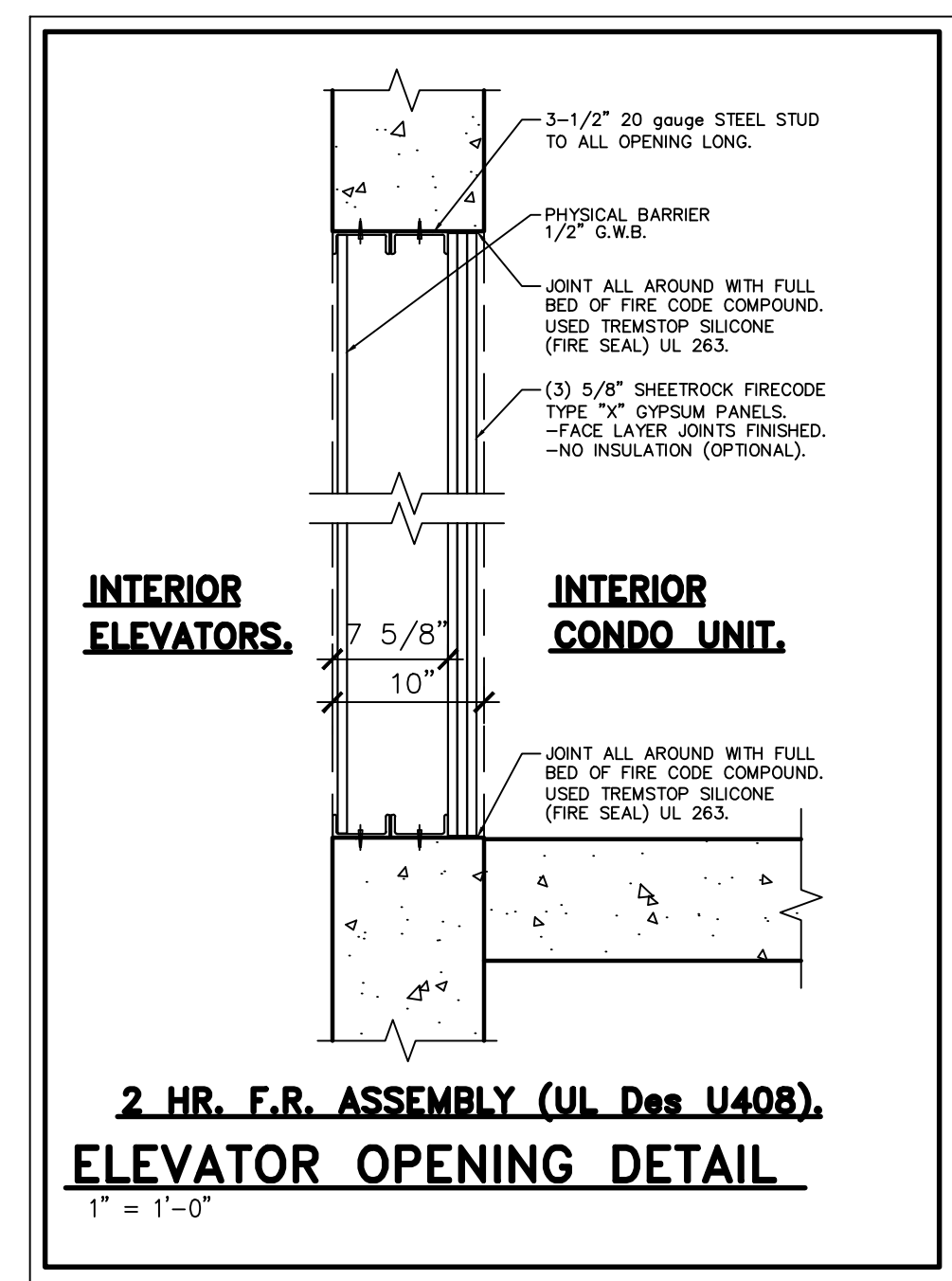
ENLARGED BATH #3
SCALE 1/2" = 1'-0"



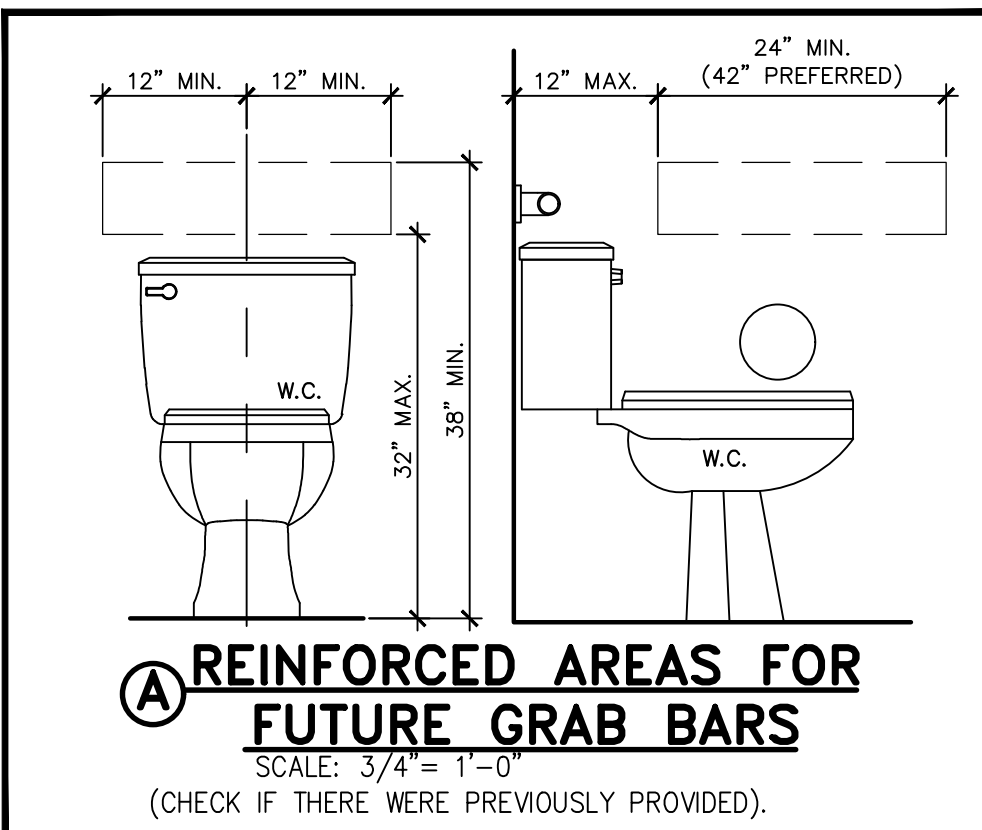
INT. PARTITION DETAIL
SCALE: 3/4" = 1'-0"



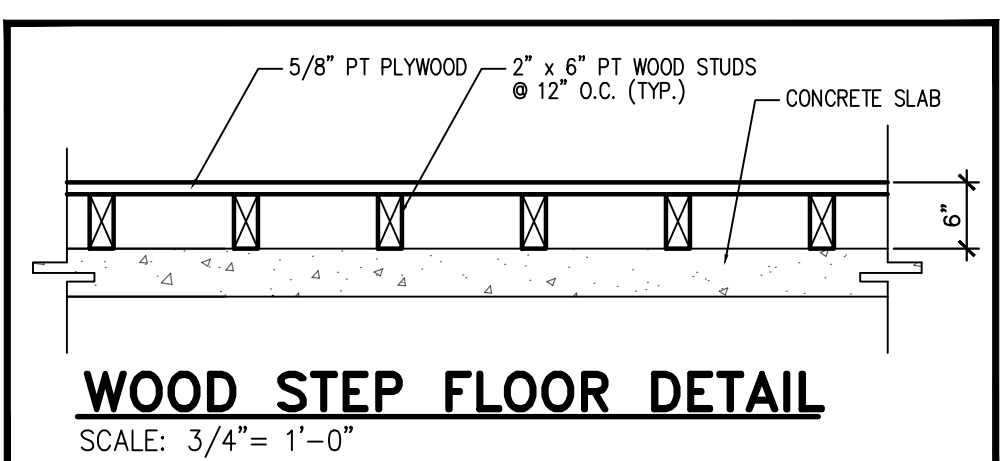
FIRESTOP DETAIL



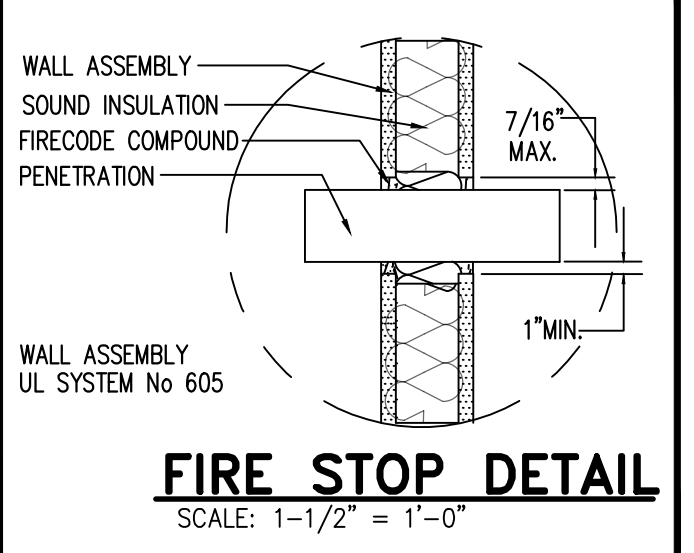
**2 HR. F.R. ASSEMBLY (UL Des U408),
ELEVATOR OPENING DETAIL**
1" = 1'-0"



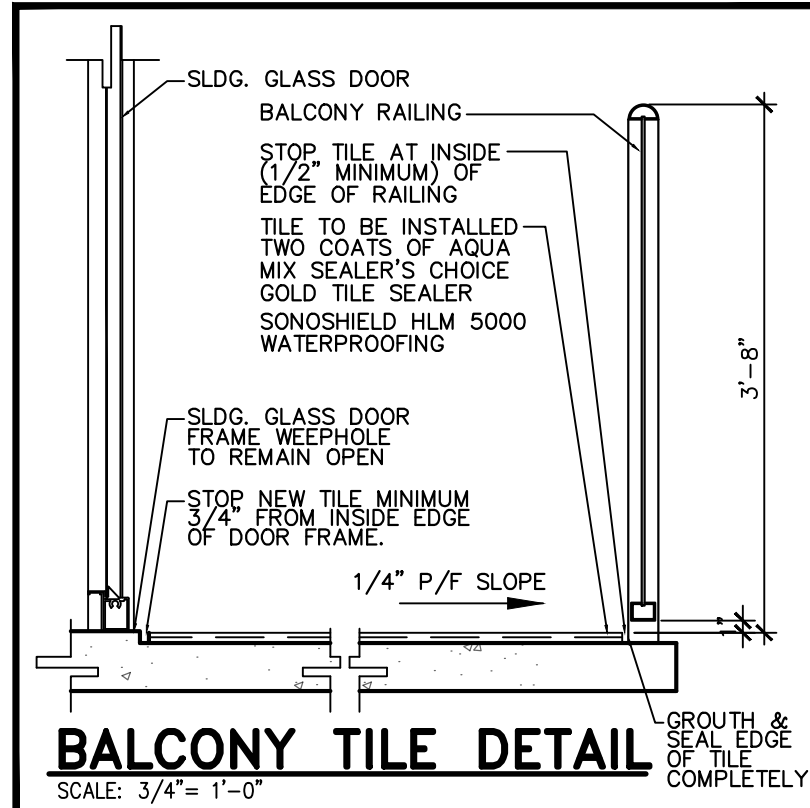
REINFORCED AREAS FOR FUTURE GRAB BARS
SCALE: 3/4" = 1'-0"
(CHECK IF THERE WERE PREVIOUSLY PROVIDED).



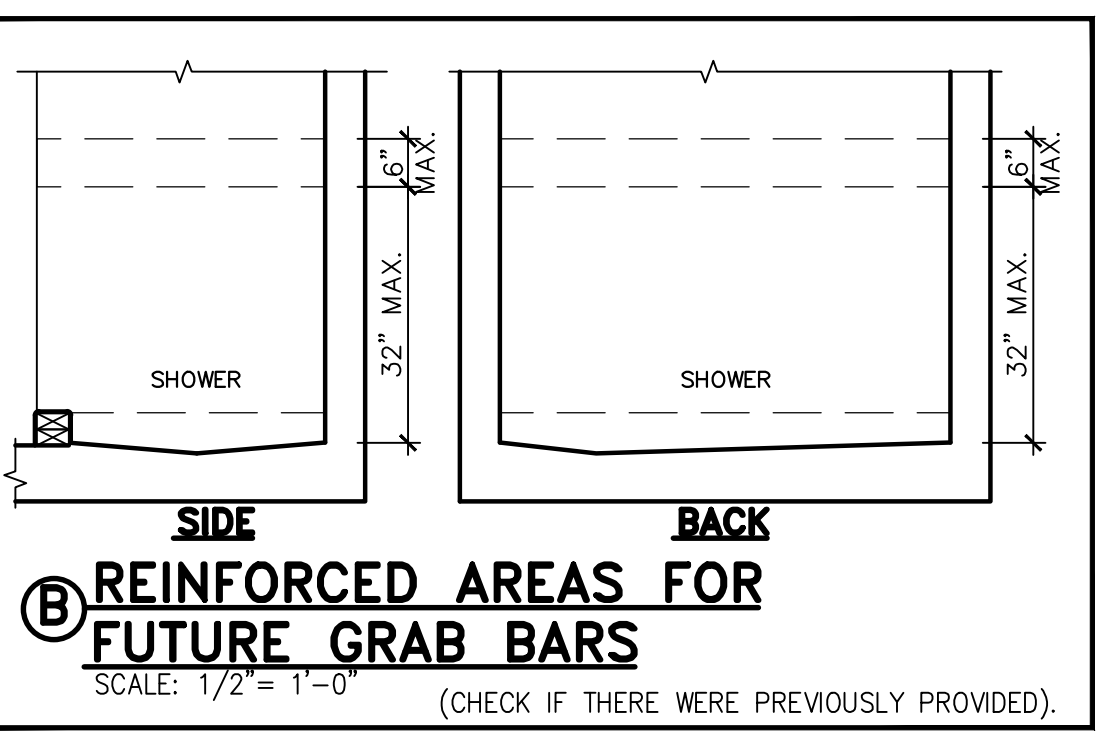
WOOD STEP FLOOR DETAIL
SCALE: 3/4" = 1'-0"



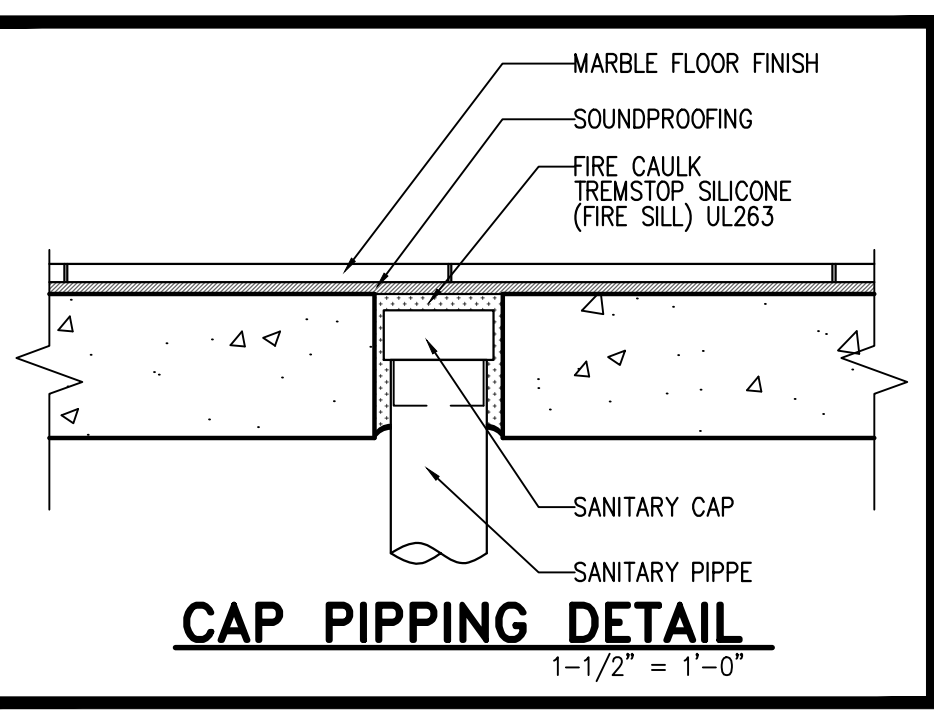
FIRE STOP DETAIL
SCALE: 1-1/2" = 1'-0"



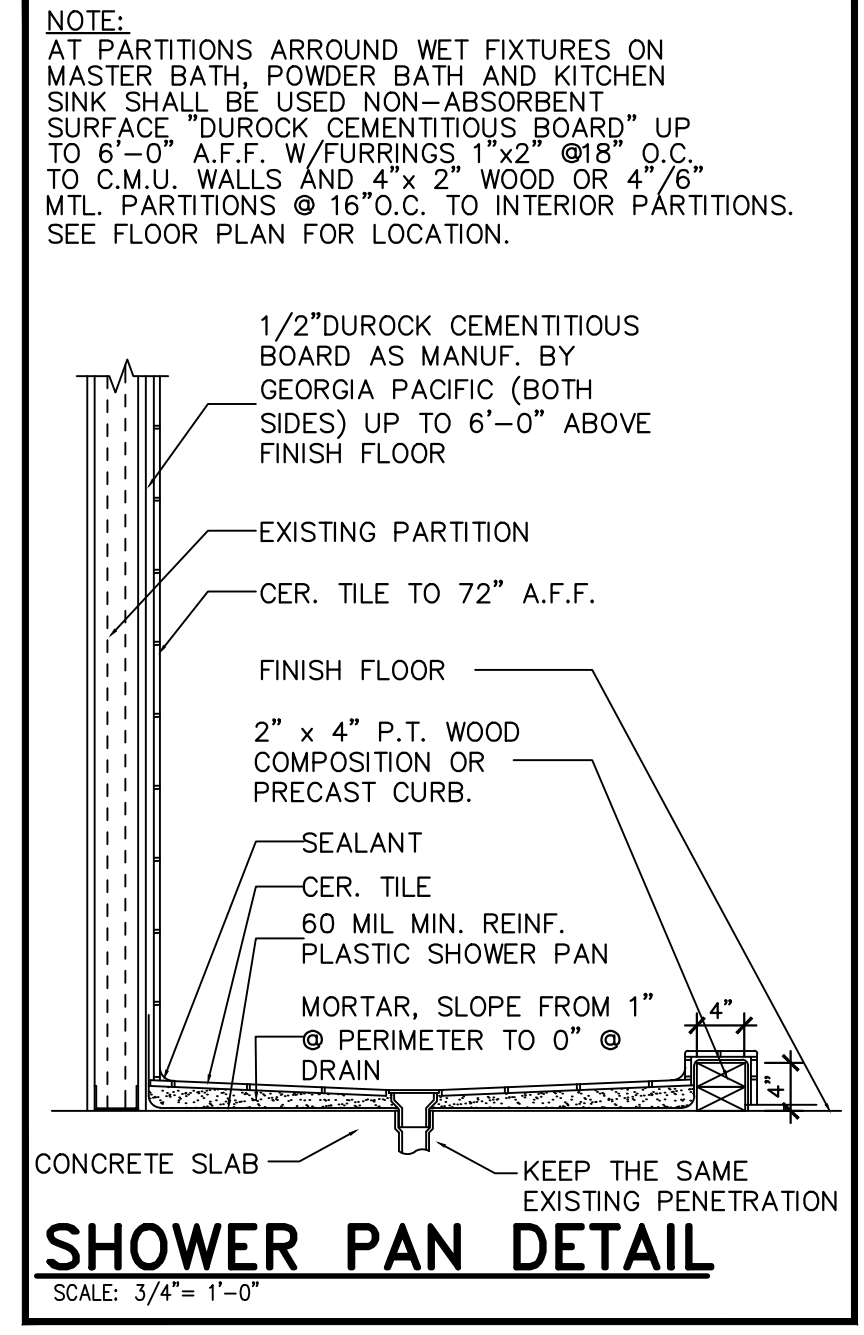
BALCONY TILE DETAIL
SCALE: 3/4" = 1'-0"



REINFORCED AREAS FOR FUTURE GRAB BARS
SCALE: 1/2" = 1'-0"
(CHECK IF THERE WERE PREVIOUSLY PROVIDED).



CAP PIPING DETAIL
1-1/2" = 1'-0"



SHOWER PAN DETAIL
SCALE: 3/4" = 1'-0"

Fine Line Engineers Inc.
Electrical, Mechanical, Plumbing
Fire Protection, Construction Administration
7600 W. 207th Ave Suite #110 Hialeah, FL 33016
Voice: 786.953-4901 - Fax: 786.953-4907
E-mail: cadinfo@fineengineers.com

GEORGE FREUD, P.E.
REGISTERED ENGINEER NO. 32578
STATE OF FLORIDA CA# 29796

DATE _____

WESTHAVEN
CONSTRUCTION SERVICES, INC.

Weathaven Construction Services, Inc.
8254 NW South River Drive, Mealey FL 33166
LIC No CBC1596915
305-556-1416 Call 905-978-8624
arch@wca.com

Fine Line Engineers Inc.
Electrical, Mechanical, Plumbing, Fire Protection
Construction Administration
7600 WEST 207th AVE SUITE 110 HIALEAH, FLORIDA, 33016
E-mail: fine@fineengineers.com

INTERIOR REMODELING and FINISHING on
CONTINUUM SOUTH TOWER No 2001
for: DAVID and IRINA AZRAN
100 South Pointe Drive No 2001
Miami Beach, FL 33139

JOB No. 2022/07 ROD

STARTED: 08/22/22

COMPLETED: 09/12/22

REVISION

No.	DESCRIPTION	DATE

A-3

Copyright notice: These drawings, designs and ideas are the property of Westhaven Construction Services, Inc. and are protected under the copyright laws of Florida. No part thereof shall be copied, or used in connection with any other work than for the specific project for which they have been prepared without written consent of Westhaven Construction Services, Inc.