

BEDROOM CLOSET

CONTINUUM SOUTH



IMAGE 1

© WESTHAVEN CN

PROGRESS DRAWING

This presentation is not intended to be used for contract pricing or fabrication purposes. All content is subject to change

DISCARD ALL PRESENTATIONS THAT WERE MADE ON THIS ITEM PRIOR TO THE DATE BELOW:

03/24/2023

NOTES

The drawings included in presentations may not be scaled. The numerical dimensions represent correct measurements. All dimensions are given from finished floor and finished wall unless otherwise noted. All design ideas, drawings and plans represented here are owned by the property of WESTHAVEN CONSTRUCTION SERVICES. Above suggested electrical and plumbing locations, must be verified in field.

PROJECT

CONTINUUM SOUTH

DESCRIPTION

DRAWING

DESIGN BY

J. ALONSO

DRAWING BY

A. QUINTERO

CREATED

03/24/2023

MODIFIED

03/24/2023

CLIENT

GLINKIN

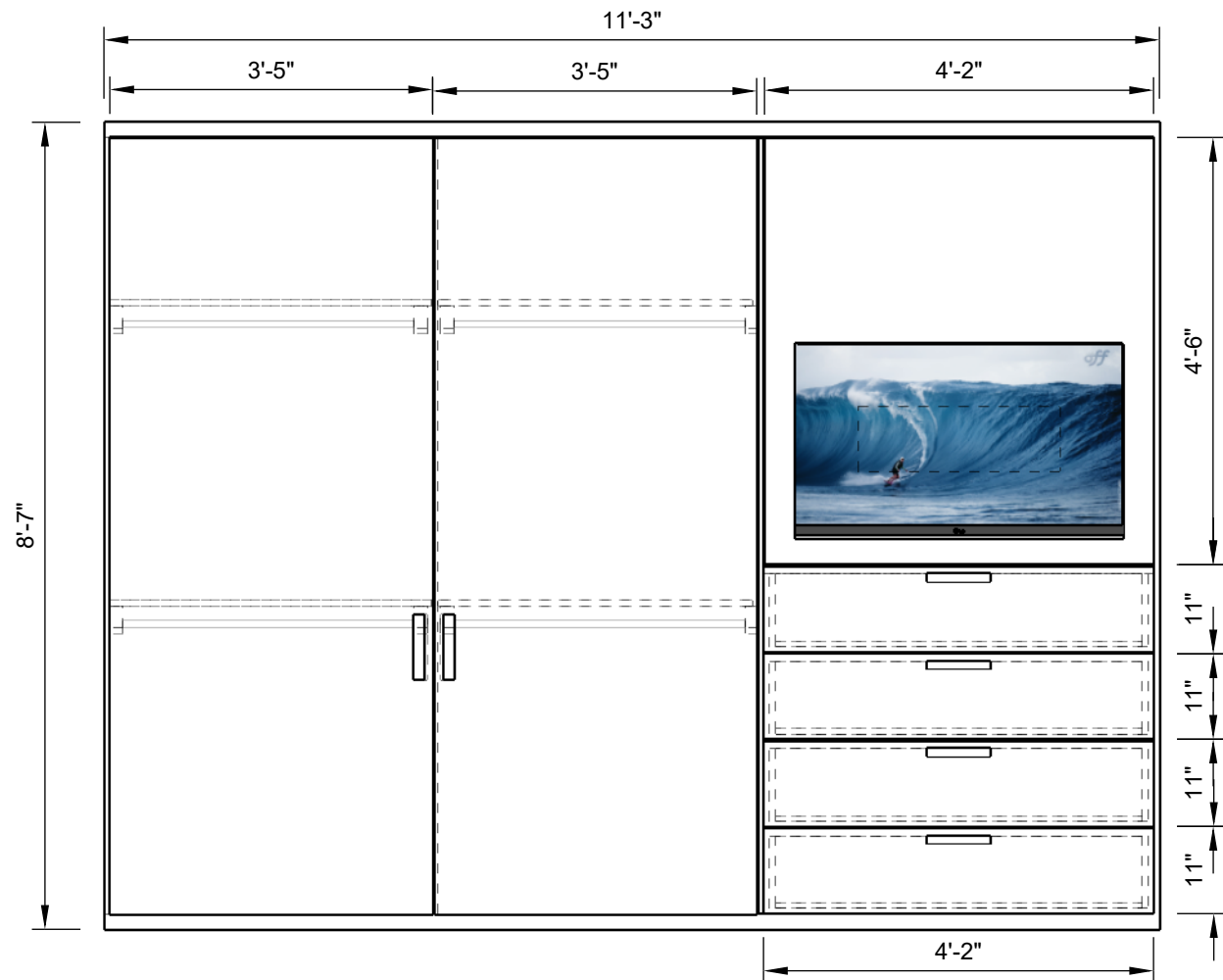
ADDRESS

DRAWING

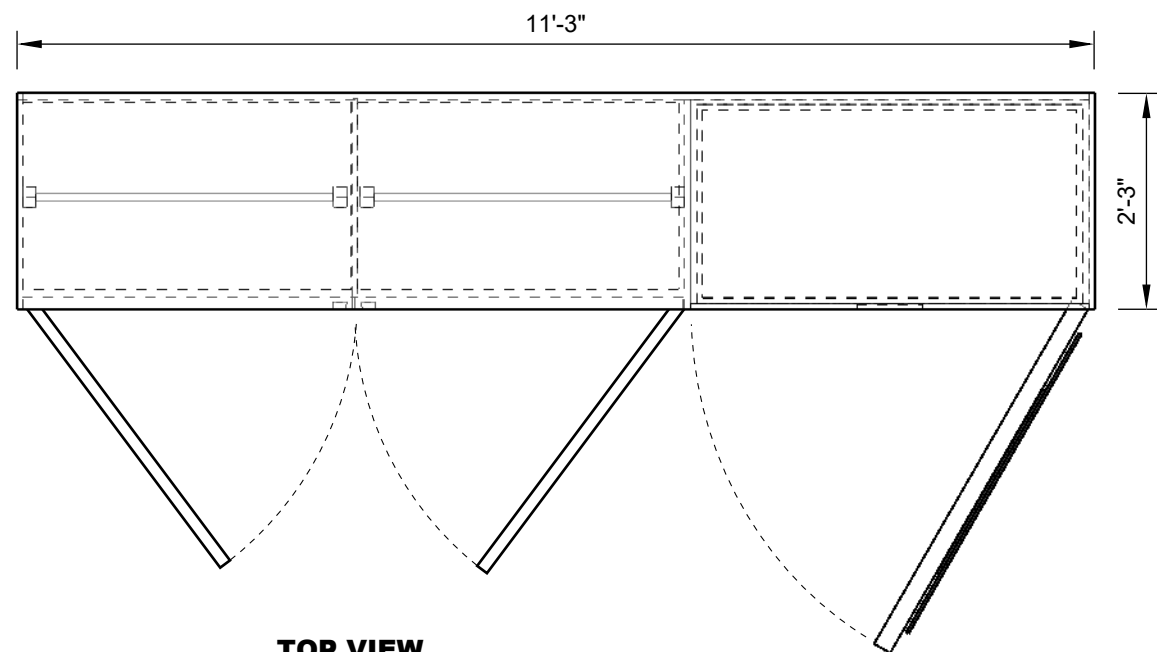


WESTHAVEN
CONSTRUCTION SERVICES, INC.

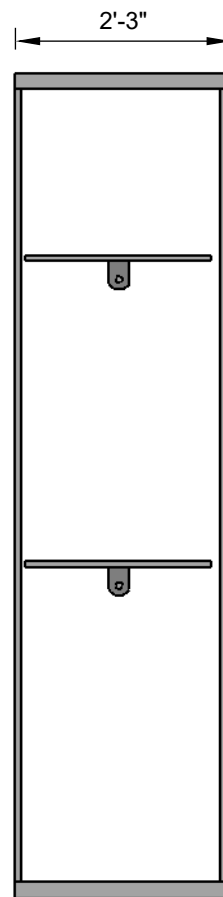
8254 NW SOUTH RIVER DRIVE, MEDLEY, FL 33166
All rights reserved.



FRONT VIEW
Scale 1:24



TOP VIEW
Scale 1:24



SIDE VIEW
Scale 1:24

THIS DRAWING IS A DESIGN CONCEPT
FOR APPROVAL

PROGRESS DRAWING

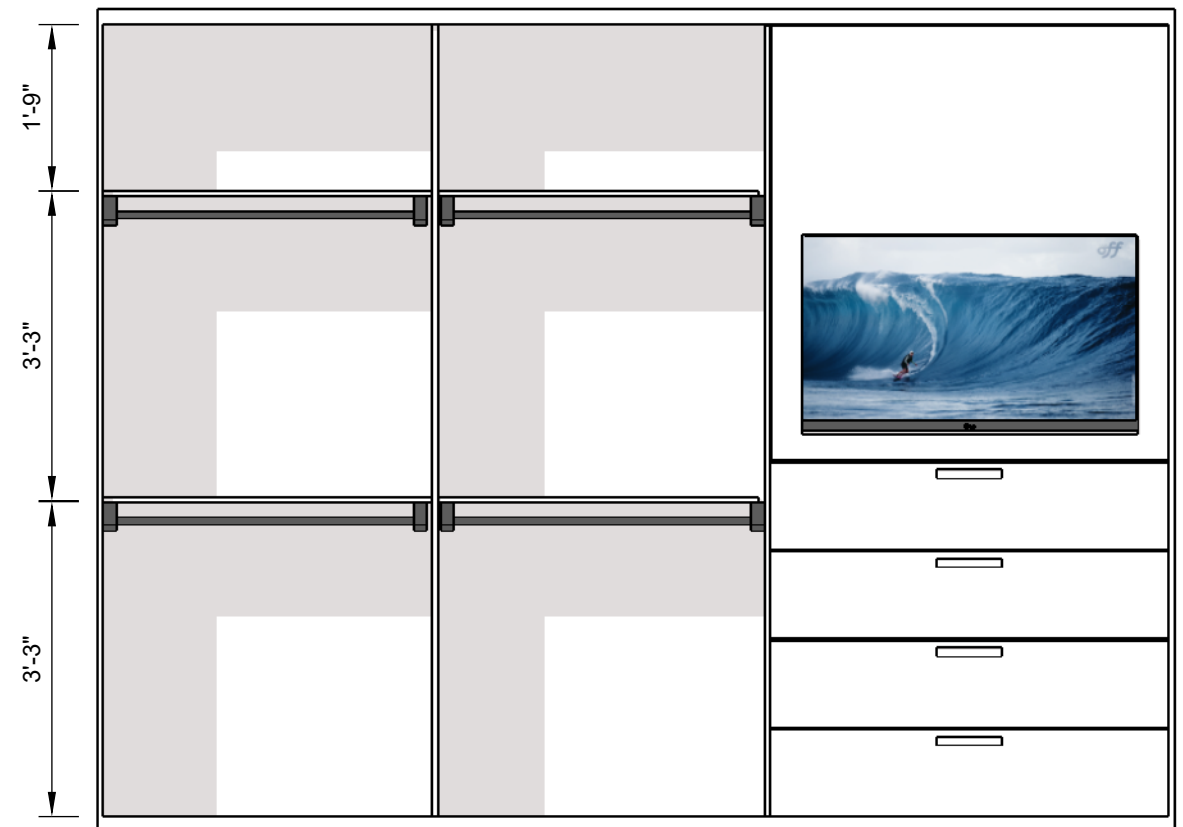
This drawing is not intended to be used for contract pricing or fabrication purposes. All content is subject to change

DISCARD ALL DRAWINGS THAT WERE MADE ON THIS ITEM PRIOR TO THE DATE BELOW:

03/24/2023

NOTES

Drawings may not be scaled. The numerical dimensions represent correct measurements. All dimensions are given from finished floor and finished wall unless otherwise noted. All design ideas, drawings and plans represented here are owned by the property of **WESTHAVEN CONSTRUCTION SERVICES**. All rights reserved. Above suggested electrical and plumbing locations, must be verified in field.



FRONT VIEW (INTERIOR)
Scale 1:24



WESTHAVEN
CONSTRUCTION SERVICES, INC.

CLIENT
GLINKIN
0000
FI, 33000

ISSUE
06/ 29/ 2021
RE - ISSUE
MM, DD, YY

PROJECT No
904
PROJECT NAME
CONTINUUM SOUTH

DRAWN BY
A.Q.
DESIGN BY
J.A.
DESCRIPTION
BEDROOM No 2 CLOSET

A-01