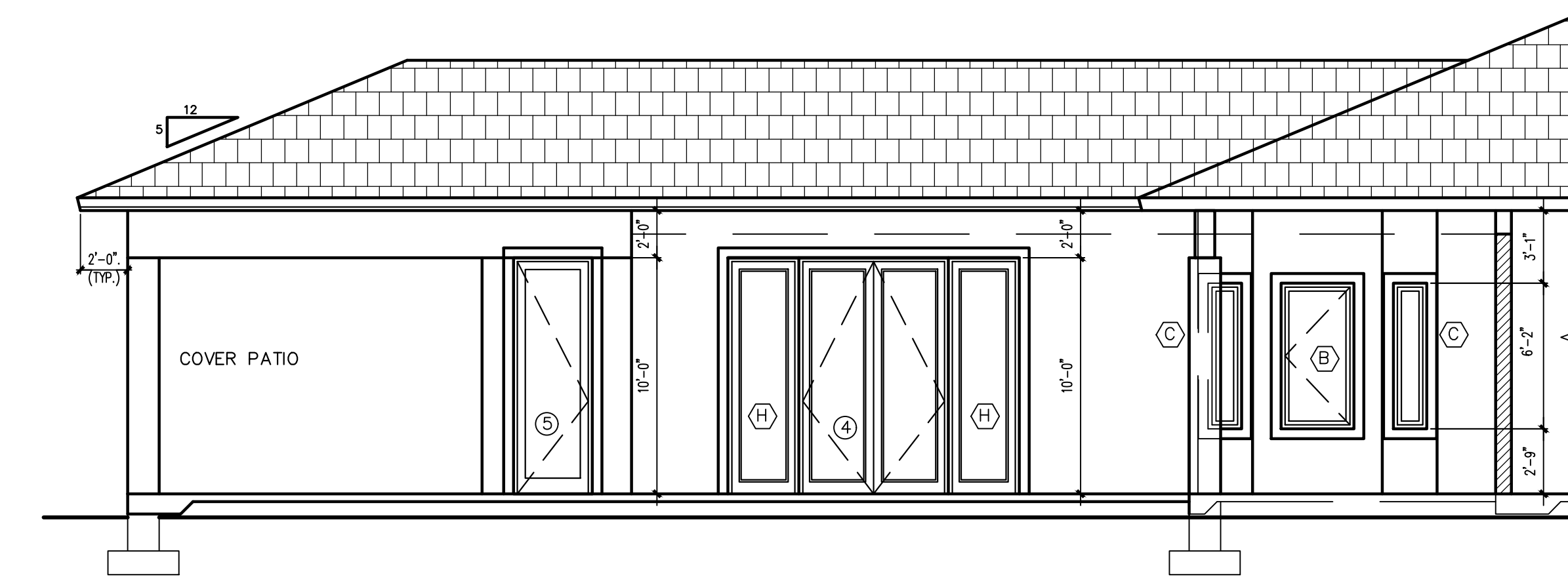


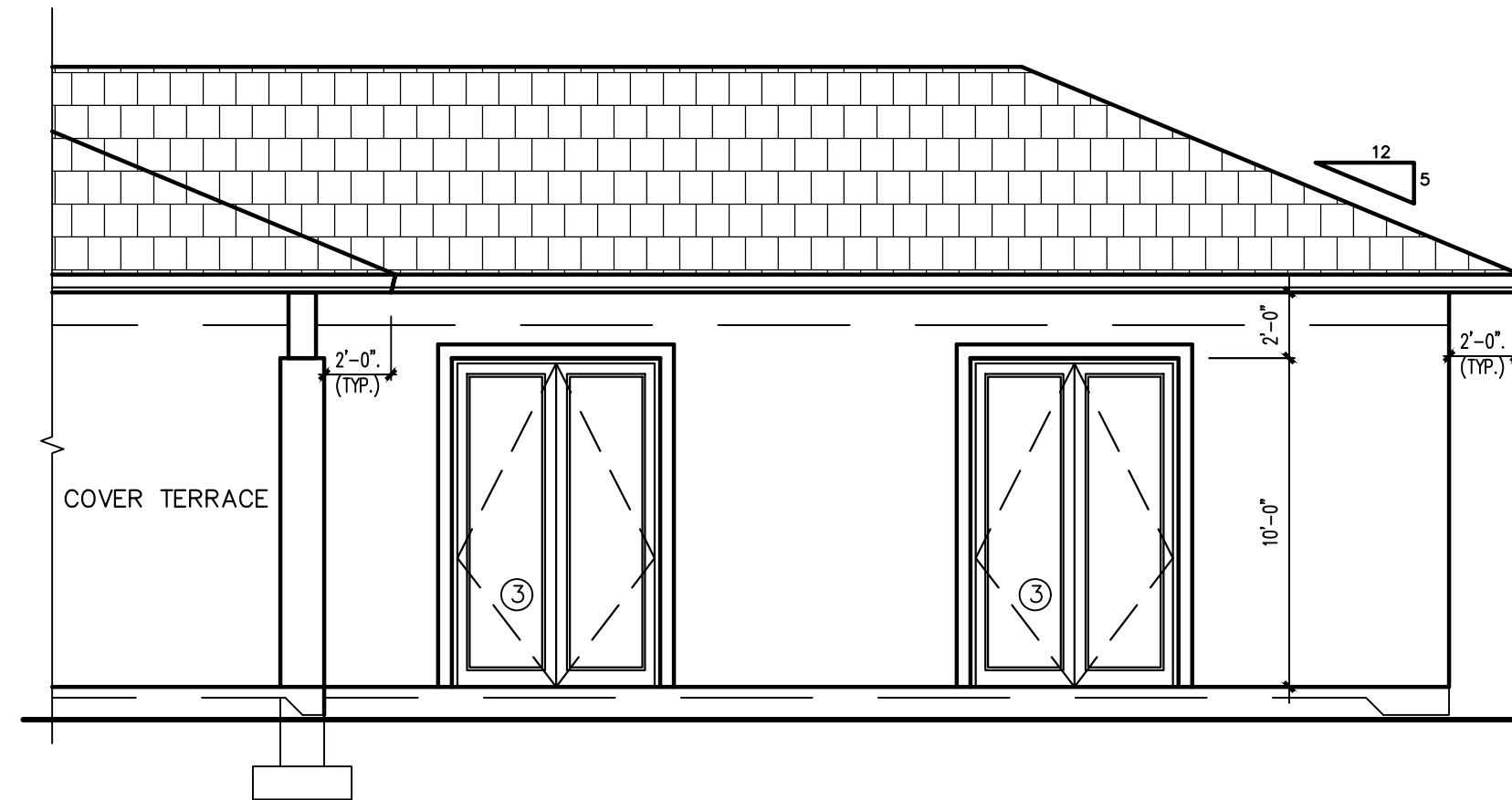
FRONT EAST ELEVATION

3/16"



INTERIOR NORTH ELEVATION

3/16"



INTERIOR SOUTH ELEVATION

3/16"



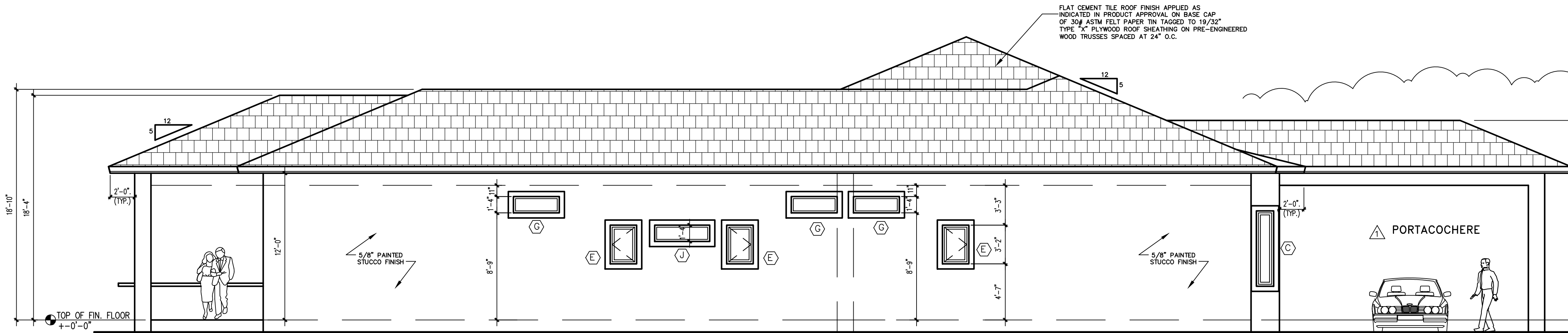
SIDE SOUTH ELEVATION

3/16"



REAR WEST ELEVATION

3/16"



SIDE NORTH ELEVATION

3/16"

WINDOW SCHEDULE							Qty.
NO	TYPE	SIZE(MO)	FRAME	GLASS	REMARKS	NOA NUMBERS	
(A)	H. R. W.	60" x 60"	ALUM.	IMPACT	ECO WINDOW SERIES 250	20-1119.10	4
(B)	CASEMENT	37" x 76"	ALUM.	IMPACT	SERIES ECO-GUARD 500	20-1110.02	4
(C)	FW	25" x 76"	ALUM.	IMPACT	SERIES ECO-GUARD 300	20-1119.05	8
(D)	FW	96" x 24"	ALUM.	IMPACT	SERIES ECO-GUARD 300	20-1119.05	1
(E)	CASEMENT	28" x 39"	ALUM.	IMPACT	SERIES ECO-GUARD 500	20-1110.02	4
(F)	H. R. W.	74" x 63"	ALUM.	IMPACT	ECO WINDOW SERIES 250	20-1119.10	1
(G)	FW	46" x 15"	ALUM.	IMPACT	SERIES ECO-GUARD 300	20-1119.05	3
(H)	FW	49" x 120"	ALUM.	IMPACT	ECO WINDOW SERIES 400	20-0828.03	2
(J)	FW	55" x 15"	ALUM.	IMPACT	SERIES ECO-GUARD 300	20-1119.05	1
(K)	SIDELITES FW	34" x 120"	ALUM.	IMPACT	ECO WINDOW SERIES 400	20-0828.03	2

GLASS TYPE:
CLEAR SINGLE PANE
U-FACTOR = 1.04
SHGC = 0.50

DOOR SCHEDULE (EXTERIOR)										Qty.		
No.	LOCATION	SIZE			TYPE	MATERIAL	FINISH	THRES.	JAM	REMARKS	NOA NUMBER	
		W	H	T								
①	FRONT ENTRY DOOR	23'-0"	0'-10"	0'-1"	SWING	WOOD	LACKED	FLUSH	METAL	(6'-4" x 3'-0")	18-1220.11	1
②	STUDY/LAUNDRY	3'-0"	10'-0"	1-3/4"	SWING	ALUM./GLASS	ANODIZED	FLUSH	METAL	SERIES 810 RESIDENTIAL	FL # 21469	2
③	REAR TO GALLERY	23'-0"	0'-10"	0'-1"	SWING	ALUM./GLASS	ANODIZED	FLUSH	METAL	SERIES 810 RESIDENTIAL	FL # 21469	5
④	FAMILY TO GALLERY	23'-0"	0'-10"	0'-1"	SWING	ALUM./GLASS	ANODIZED	FLUSH	METAL	SERIES 810 RESIDENTIAL	FL # 21469	1
⑤	CABANA BATHROOM	3'-0"	10'-0"	1-3/4"	SWING	ALUM./GLASS	ANODIZED	FLUSH	METAL	SERIES 810 RESIDENTIAL	FL # 21469	1
⑥	GARAGE	8'-0"	8'-0"	1-3/4"	OVERHEAD	METAL	ANODIZED	NONE	METAL	IMPACT RESISTANT SYSTEM	21-0312.04	2

OWNER/CONST. 03-08-21
REVISION LAYOUT (AS-BUILT REVISION).
-REVISED EXTERIOR WINDOWS AND DOORS W/SUBCONTRACTOR.
-REMOVE TRANSOM AND REPLACE WITH HIGHEST DOORS.

Fine Line Engineers Inc.
Electrical, Mechanical, Plumbing
Fire Protection, Construction Administration
7600 W. 20TH AVE SUITE #110 HALLAND BEACH, FL 33016
Phone: 766-953-4901 Fax: 766-953-4907
E-mail: cadinfo@fineengineers.com

GEORGE FREDO, P.E.
REGISTERED ENGINEER NO. 22779
STATE OF FLORIDA C&P 29796