

3401
CONTINUUM NORTH

MASTER VANITY



8254 South River Dr
Medley, FL 33166
Ph. 305 556 1416
www.westhavencn.com

PROGRESS DRAWING
FOR APPROVAL



CONTACT DESIGN TEAM

ISSUE
08/ 18/ 2023
RE - ISSUE
10/4/2023

OWNER
E. MARTINEZ
PAGE NAME
COVER PAGE
DESIGN BY
J. Alonso
DRAWN BY
A. Quintero

DESIGN CONCEPT

ALL MEASUREMENTS
MUST BE
VERIFIED IN FIELD

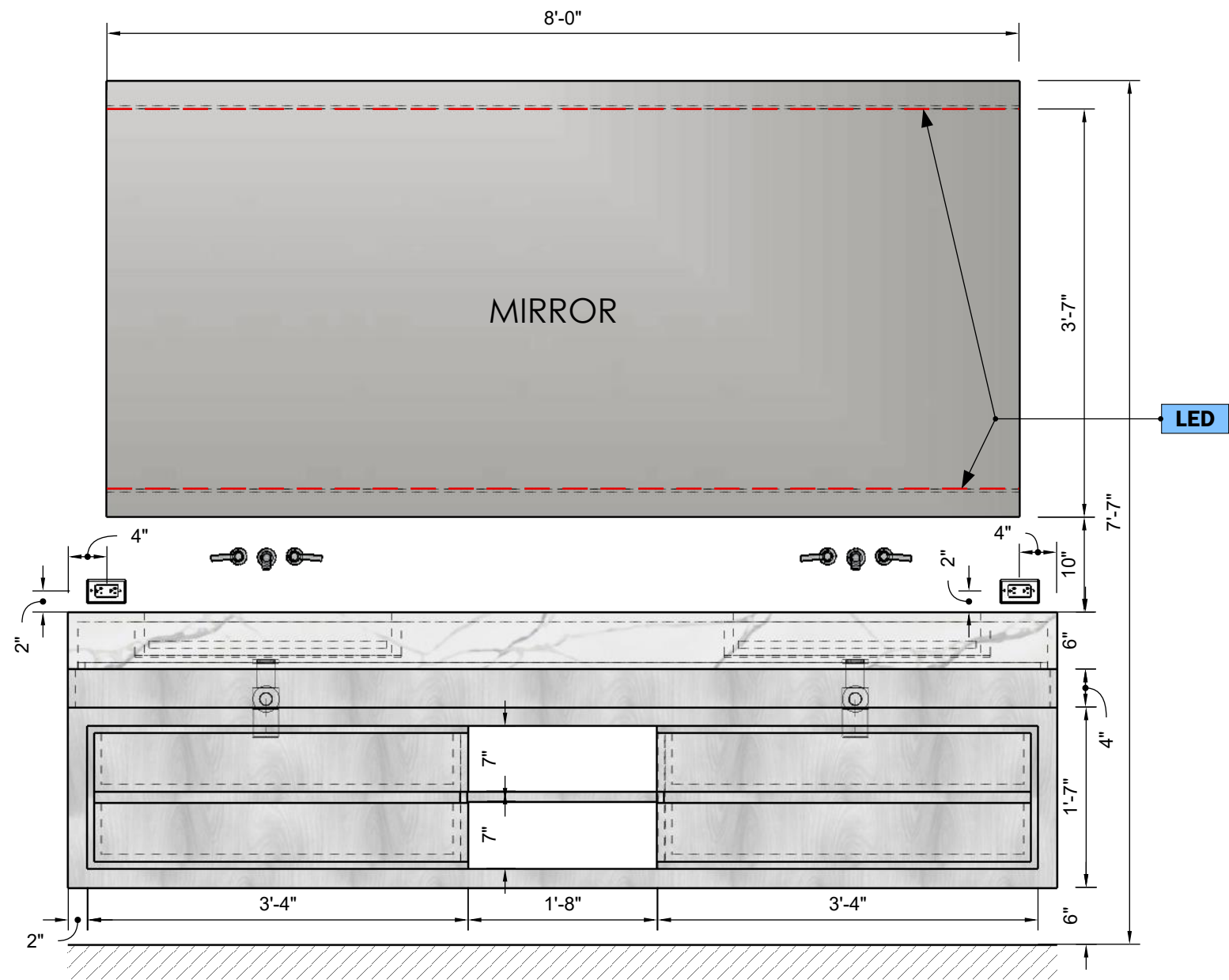
DISCARD ALL DRAWINGS THAT
WERE MADE ON THIS ITEM PRIOR
TO THE DATE BELOW:

10/4/2023

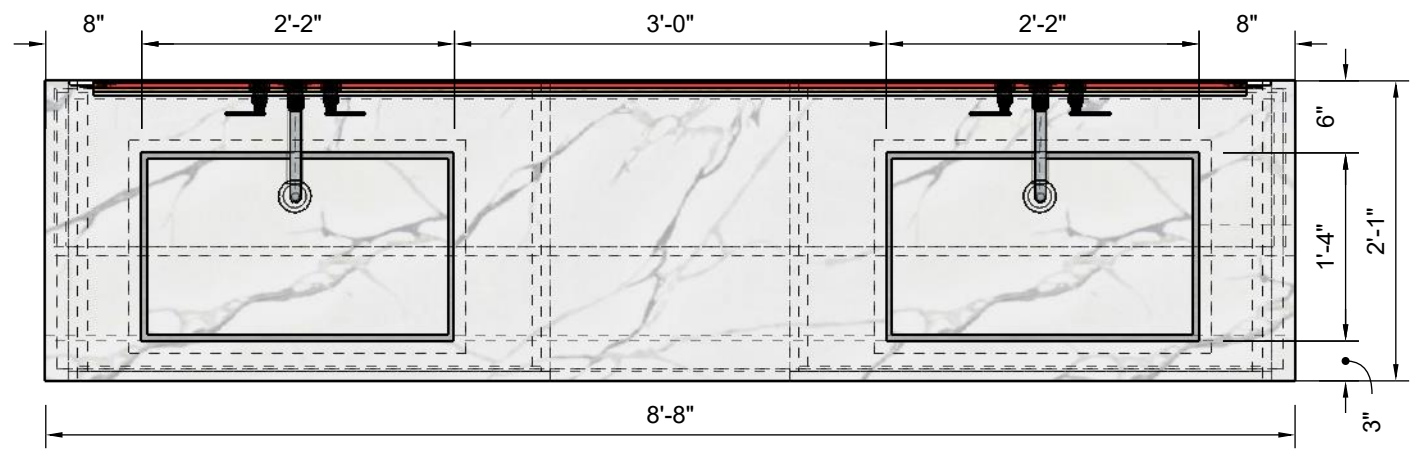
This drawing is not intended to be used
for contract pricing or fabrication
purposes.
All content is subject to change

COVER PAGE

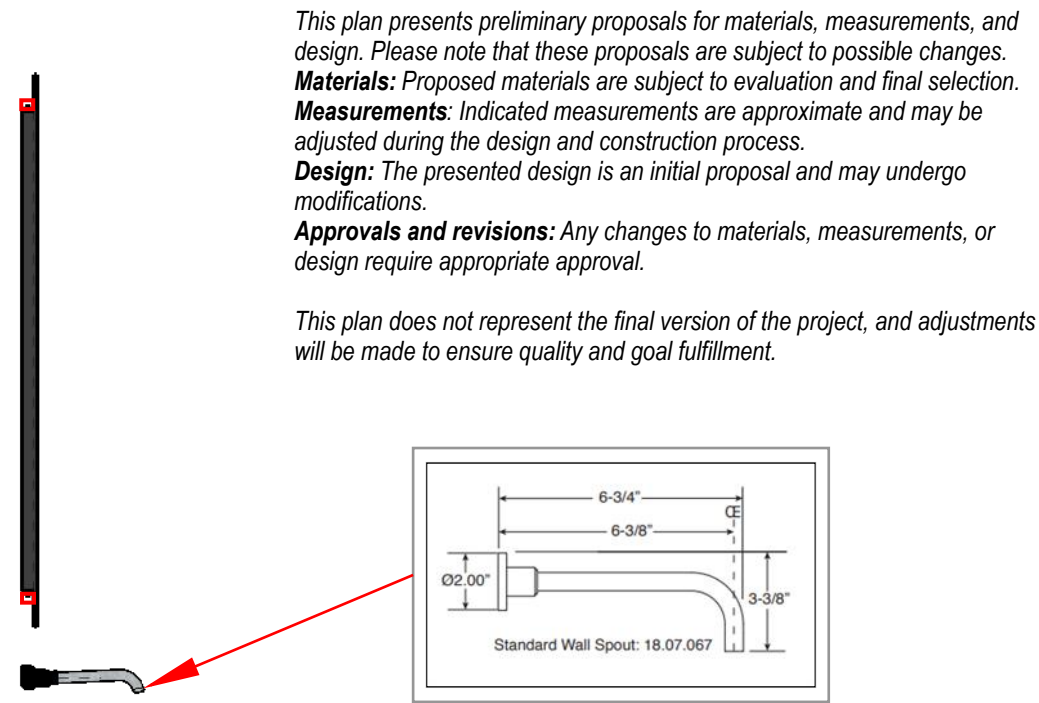
MASTER VANITY



FRONT VIEW
Scale 1:16



TOP VIEW
Scale 1:16

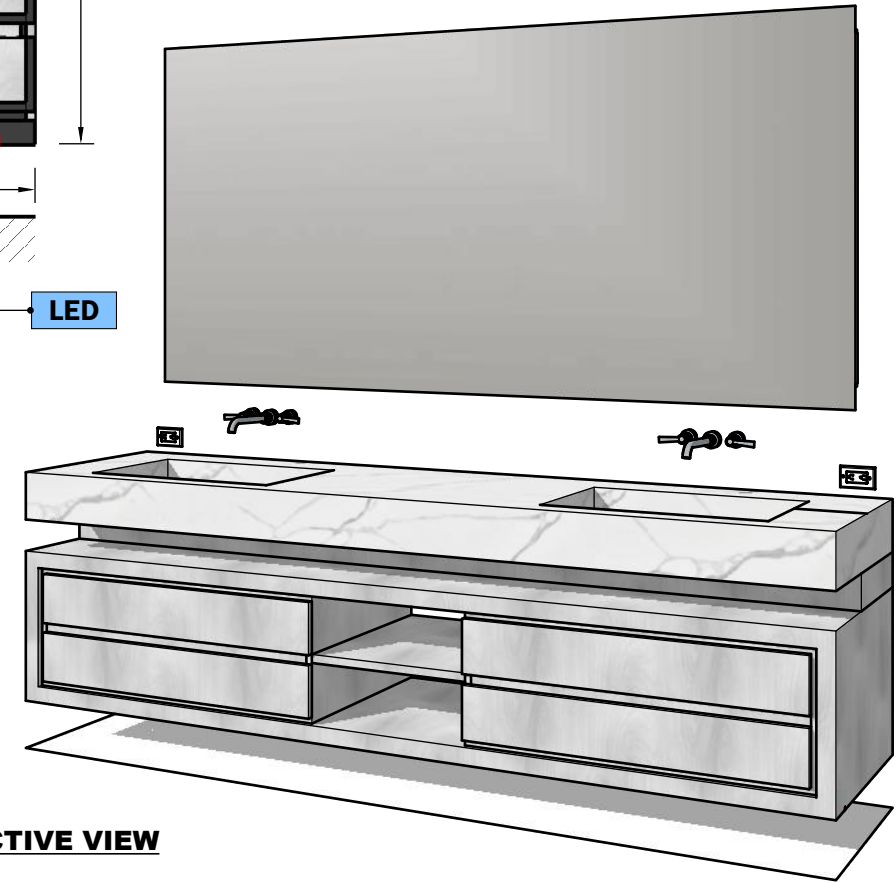


SIDE VIEW
Scale 1:24

PERSPECTIVE VIEW
Not Scaled

This plan presents preliminary proposals for materials, measurements, and design. Please note that these proposals are subject to possible changes.
Materials: Proposed materials are subject to evaluation and final selection.
Measurements: Indicated measurements are approximate and may be adjusted during the design and construction process.
Design: The presented design is an initial proposal and may undergo modifications.
Approvals and revisions: Any changes to materials, measurements, or design require appropriate approval.

This plan does not represent the final version of the project, and adjustments will be made to ensure quality and goal fulfillment.



NOTE

Drawings may not be scaled.

The numerical dimensions represent correct measurements. (If not indicated, the precision of the dimensions by default is to 1")

All design ideas, drawings and plans represented here are owned by the property of WESTHAVEN CONSTRUCTION SERVICES, INC. All rights reserved. Above suggested electrical and plumbing locations, must be verified in field.

