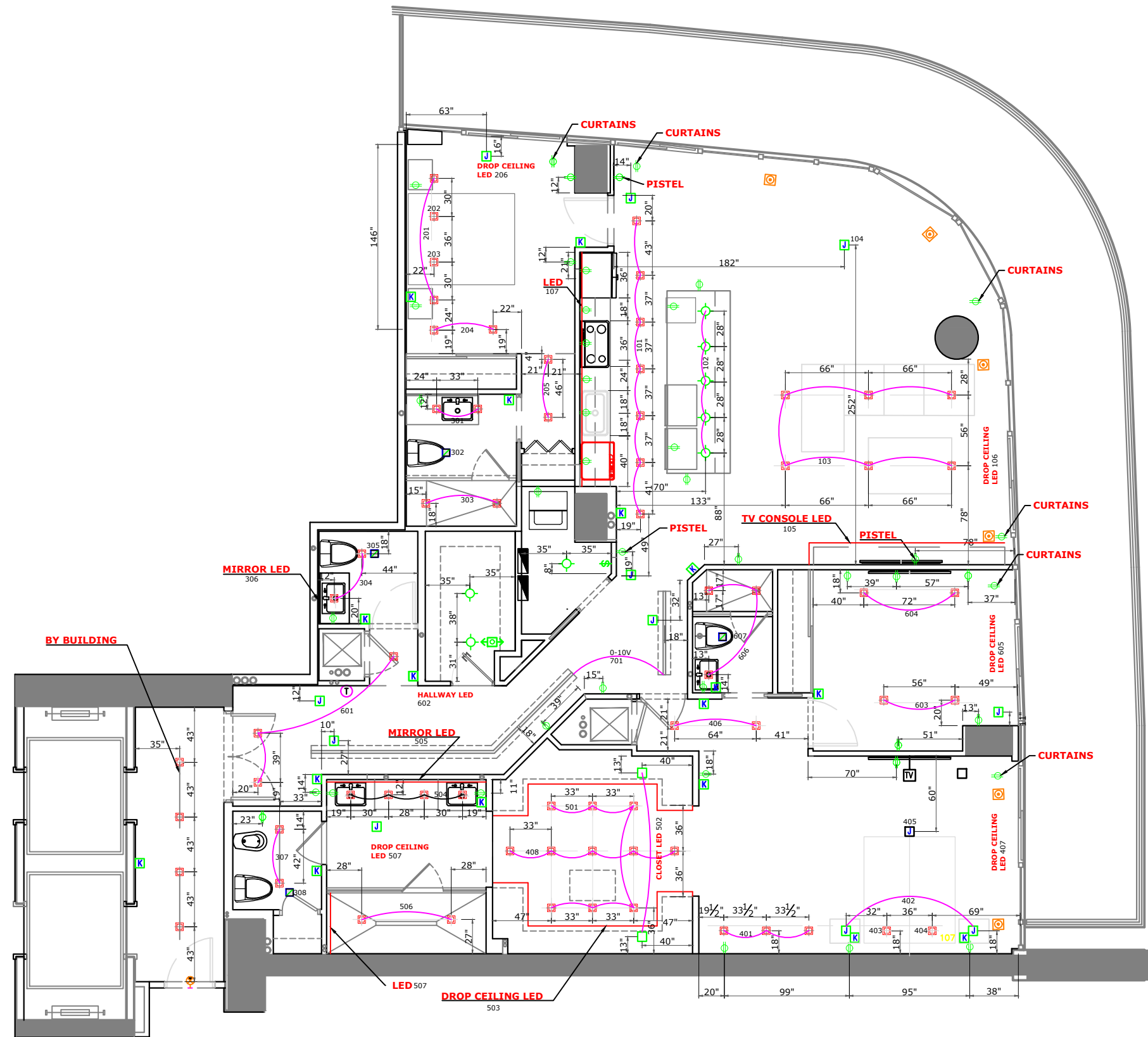


**NOTES**

Drawing may not be scaled.  
The numerical dimensions represent correct measurements.  
All dimensions are given from finished floor and finished wall unless otherwise noted.  
All design ideas, drawings, and plans represented here are owned by the property of  
**WESTHAVEN CONSTRUCTION SERVICES INC.**  
All rights reserved.  
Above suggested electrical and plumbing locations, must be verified in field.  
All these ideas are based on the existing conditions in the apartment and to be verified after demolition.

**DATE**

**CLIENT APPROVED / ACCEPT.**



Scale 1 = 1/8"



**WESTHAVEN**  
CONSTRUCTION SERVICES, INC.

**CLIENT**

**ADDRESS**  
SOUTH POINTE DR.

**PROJECT**  
1206

**PROJECT NAME**  
CONTINUUM SOUTH

**DRAWN BY**  
Abel Q.

**DESIGN BY**  
Joel A.

**DESCRIPTION**  
LIGHTS LOCATIONS

**A-01**